



## RONSTAN 2020 INTERNATIONAL FINN AUSTRALIAN CHAMPIONSHIP

### SAILING INSTRUCTIONS

Organising Authority:

The Adelaide Sailing Club Inc

in conjunction with

The International Finn Association of Australia

*The notation '[DP]' in a rule in the SI means that the penalty for a breach of that rule may, at the discretion of the protest committee, be less than disqualification.*

#### **1 RULES**

- 1.1 The regatta will be governed by the rules as defined in *The Racing Rules of Sailing*.
- 1.2 The Prescriptions of Australian Sailing will apply.
- 1.3 The Australian Sailing Special Regulations Part 2 – Off The Beach Boats shall apply.
- 1.4 RRS 44.1 is changed so that the Two – Turns Penalty is replaced by the One – Turn Penalty.

#### **2 NOTICES TO COMPETITORS**

Notices to competitors will be posted on the official notice board located downstairs on the Northern side of the undercroft.

#### **3 CHANGES TO SAILING INSTRUCTIONS**

Any change to the sailing instructions will be posted before 0900 on the day it will take effect, except that any change to the schedule of races will be posted by 1800 on the day before it will take effect.

#### **4 SIGNALS MADE ASHORE**

- 4.1 Signals made ashore will be displayed at the flagpole at the northern end of the upper deck of the clubhouse.
- 4.2 When flag AP is displayed ashore, '1 minute' is replaced with 'not less than 30 minutes' in the race signal AP.

### **5. Schedule**

Date	Time / Warning Signal	Event
Sunday 05 Jan	1300 - 1600	Registration and Measurement
Sunday 05 Jan	1800 -2000	Welcome function and briefing
Monday 06 Jan	1000 -1100	Registration
Monday 06 Jan	1300	Racing
Tuesday 07 Jan	1300	Racing
Wednesday 08 Jan	1300	Racing
Thursday 09 Jan	1300	Racing
Friday 10 Jan	1200	Racing
Friday 10 Jan	1900	Presentation

- 5.1 Ten (10) races with two races per day are scheduled
- 5.2 Additional races may be sailed on any day provided that the regatta does not become more than one race ahead of schedule
- 5.3 No more than 3 races will be sailed on one day

## **6 CLASS FLAG**

- 6.1 The Class flag shall be the Finn Class Flag (light blue flag with Finn logo).

## **7 RACING AREAS**

- 7.1 The racing area will be in front and to the South of the Adelaide Sailing Club in Gulf St Vincent.

## **8 THE COURSES**

- 8.1 Courses shall be windward and return with a leeward gate and downwind finish.
- 8.2 The course diagram describing the courses and marks are displayed in Attachment A
- 8.3 No Later than the warning signal the race committee vessel will display the course designation and may display the approximate compass bearing to the first mark.
- 8.4 If one of the gate marks is not laid then the laid mark must be left to port as 2P.

## **9 MARKS**

- 9.1 Marks 1, 2S and 2P will be orange inflatable buoys.
- 9.2 New marks, as provided in SI 11, will be pink inflatable buoys.
- 9.3 The starting mark will be an orange conical inflatable mark or an orange flag on a race committee vessel.
- 9.4 The finishing mark will be a blue flag on a staff attached to a small float or a race committee boat.

## **10 THE START**

- 10.1 Races will be started by using RRS 26 with the warning signal made 5 minutes before the starting signal.
- 10.2 The L Flag displayed on the race committee vessel indicates that another race will be started following the completion of the current race.
- 10.3 To alert boats that a race or sequence of races will begin soon, the orange starting line flag will be displayed with one sound at least five minutes before a warning signal is made.

- 10.4 A boat that does not start within 5 minutes after her starting signal will be scored Did Not Start without a hearing. This changes RRS A4 and A5.

## **11 CHANGE OF THE NEXT LEG OF THE COURSE**

To change the next leg of the course, the race committee will lay a new mark (or move the gate or the finishing line) and remove the original mark as soon as practicable. When in a subsequent change a new mark is replaced, it will be replaced by an original mark.

## **12 THE FINISH**

The finishing line will be between a staff displaying a blue flag on the race committee boat at the Starboard end and a blue flag at the Port end.

## **13 PENALTY SYSTEM**

- 13.1 RRS 44.1 is changed so that the Two-Turns Penalty is replaced by the One-Turn Penalty.  
13.2 Appendix P5 shall apply in accordance with IFA Class Rules C.1.1.(1) and C.1.1.(2)  
13.3 When wind speeds are averaging more than 10 knots across the course, the Race Committee may, in accordance with class rules, display Code Flag O, which switches off Rule 42.  
13.4 If conditions alter and wind speed drops below 10 knots, the Race Committee vessel and/or Mark Boat, may display Code Flag R accompanied by repeated sound signals. This is to indicate to competitors that Rule 42 has been switched back on again.

## **14 TIME LIMITS AND TARGET TIMES**

- 14.1 The target time for races is 60 minutes  
14.2 The time limit for the first boat in each race shall be 90 minutes  
14.3 Failure to meet the target time will not be grounds for redress.  
14.4 Boats failing to finish within 20 minutes after the first boat sails the course and finishes will be scored Did Not Finish without a hearing. This changes RRS 35, A4 and A5.

## **15 Spare**

## **16 PROTESTS AND REQUESTS FOR REDRESS**

- 16.1 Protest forms are available at the race office, located at the Southern end of the undercroft. Protests and requests for redress or reopening shall be delivered there within the protest time limit.  
16.2 The protest time limit is 60 minutes after the last boat has finished the last race of the day or the race committee signals no more racing today, whichever is later.  
16.3 Notices will be posted no later than 30 minutes after the protest time limit to inform competitors of hearings in which they are parties or named as witnesses. Hearings will be held in the protest room, located in the upper deck of the club house, beginning at the time posted.  
16.4 Notices of protests by the race committee, technical committee or protest committee will be posted to inform boats under RRS 61.1(b).  
16.5 Breaches of SIs 18, 21, 23 and 27 will not be grounds for a protest by a boat. This changes RRS 60.1(a).  
16.6 On the last scheduled day of racing a request (by a party to a hearing) for reopening a hearing or a request for redress based on a protest committee decision shall be delivered  
(a) within the protest time limit if the requesting party was informed of the decision the previous day.  
(b) no later than 30 minutes after the decision if it was posted on that day.  
This changes RRS 62.2 and RRS 66.  
16.7 Penalties may be less than disqualification if the protest committee so decides. The scoring abbreviation for a discretionary penalty imposed under this instruction will be DPI.

## **17 SCORING**

- 16.1 The Low Points Scoring System specified in RRS Appendix A will apply.  
16.2 Five races are required to be completed to constitute a series.

- 16.3 When five (5) or fewer races have been completed, a boat's series score will be the total of her race scores.
- 16.4 When from six (6) to ten (10) races have been completed, a boat's series score will be the total of her race scores excluding her worst score.

## **18 SAFETY REGULATIONS**

- 18.1 Check-Out and Check-In: All boats must check-out before leaving the shore and check-in as soon as practicable after returning to shore at the completion of the session's racing. Check-in and check-out is located under the balcony of the club. [DP]
- 18.2 To Check -Out competitors shall place a marker on their labelled space on the check-out / check-in board and remove their marker to check-in. [DP]
- 18.3 The Sign-On period will close at the scheduled Warning Signal time of the first race for that session on that day. Competitors who did not sign-on for the first race in a session but wish to sign on for subsequent races in that session must sign-on prior to launching then inform the Start Boat of their intention to race.
- 18.4 A boat that retires from a race shall notify the race committee as soon as possible and sign the retirement sheet adjacent to the check-out / check-in board. [DP]
- 18.4 The check-in period will close at the end of the protest cut off time. [DP]
- 18.5 **Personal Floatation Devices.** Competitors are reminded that it is a requirement under Australian Sailing Special Regulations that they wear approved personal flotation devices at all times while afloat and not just when racing. [DP]

## **19 REPLACEMENT OF CREW OR EQUIPMENT**

- 19.1 Substitution of competitors will not be allowed without prior written approval of the race committee. [DP]
- 19.2 Substitution of damaged or lost equipment will not be allowed unless authorized by the race committee. Requests for substitution shall be made to the committee at the first reasonable opportunity. [DP]

## **20 EQUIPMENT AND MEASUREMENT CHECKS**

A boat or equipment may be inspected or measured at any time for compliance with the class rules and these sailing instructions.

## **21 EVENT ADVERTISING**

Boats shall display event advertising and bow numbers supplied by the organizing authority at registration and shall adhere to the placement requirements. If this rule is broken, World Sailing Regulation 20.9.2 applies. [DP]

## **22 OFFICIAL BOATS**

Official boats will be marked as follows: Official Course and Safety boats will display an ASC burgee. Media boats will display a media flag.

## **23 SUPPORT BOATS – RRS Definition *Support person***

- 23.1 Support boats shall register by completing the form available at registration (before racing commences). [DP]
- 23.2 Support boats shall stay 100 metres outside any areas where boats are racing from the time of the preparatory signal until all boats have finished or retired or the race committee signals a postponement or abandonment. [DP]
- 23.3 Each support boat is required to have a working VHF radio tuned into a frequency designated by the Race Committee at all times whilst within the racing area as provided in SI 7.
- 23.4 Support boats are required to be available to act as a rescue boat as directed by the Race Committee if required.

## **24 TRASH DISPOSAL**

Trash may be placed aboard support or official boats. [DP]

## **25 RADIO COMMUNICATION**

Except in an emergency, a boat that is racing shall not make voice or data transmissions and shall not receive voice or data communication that is not available to all boats. [DP]

## **26 PRIZES**

26.1 The following prizes will be awarded;

- Overall 1st, 2nd 3rd
- 1<sup>st</sup> Master (40 to 50)
- 1<sup>st</sup> Grand Master (50 to 60)
- 1<sup>st</sup> Great Grand Master (60 to 70)
- 1<sup>st</sup> Legend (70 +)

26.2 Other prizes may be awarded at the discretion of the Organising Authority.

## **27 MEDIA**

All competitors, parents, legal guardians and custodians, and all support boat personnel provide their permission for all photographs, video, TV and sound recordings to be the property of the organisers and used for any purpose including public viewing and posting on the event website.

## **28 DISCLAIMER OF LIABILITY**

28.1 It is the competitor's decision to enter an Event or to start and continue in any race. Competitors shall accept that their participation in an Event is at their exclusive risk in every respect. See Racing Rule 4, *Decision to Race*.

28.2 None of the Organising Authority, The International Finn Association of Australia , their officers, members, volunteers, servants or agents accept any responsibility whatsoever in respect of loss of life, personal injury or damage to property which may be sustained by reason of their participation or intended participation in this event or howsoever arising in connection with the event.

## **29 INSURANCE**

29.1 Each participating boat competing shall be insured with third party liability insurance with a minimum cover of AUS\$10,000,000 per incident.

29.2 All competitors who submit the entry form are deemed to have made a declaration that they hold such cover..

## COURSES

### Course Designations

(and sequence which marks shall be rounded)

## Course Diagram

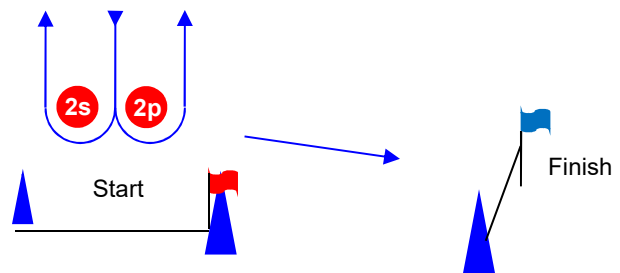
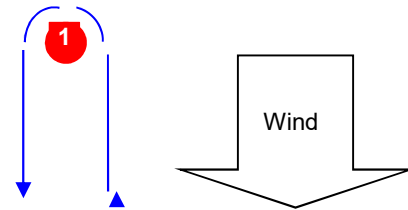


Diagram is Not to Scale

Course 1= Start, 1, 2s / 2p, 1, 2p, Finish

Course 2 = Start, 1, 2s / 2p, 1, 2s/2p, 1, 2p, Finish