

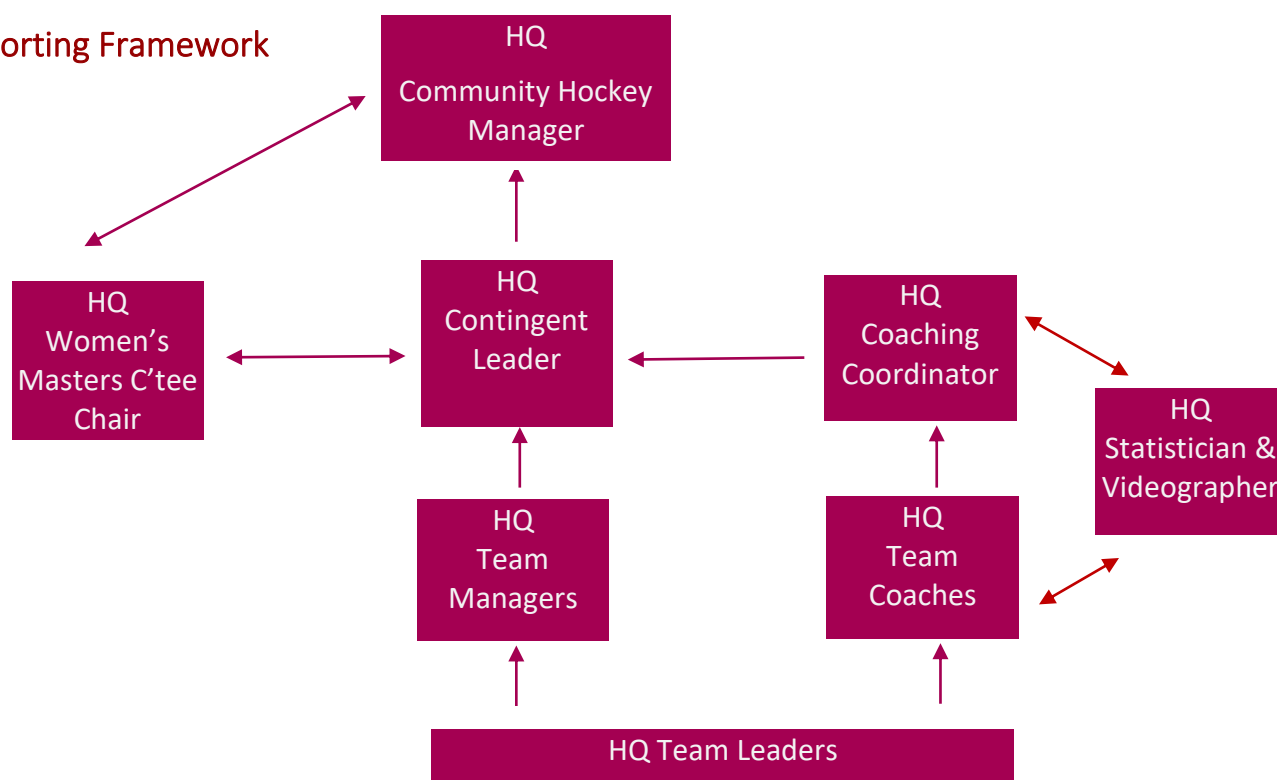
WOMEN'S MASTERS STATISTICIAN & VIDEOGRAPHER POSITION DESCRIPTION

Purpose

To provide support for appointed Coaches, including recording of statistics and videos during training sessions and matches

- To liaise with HQ Women's Masters Coaching Coordinator to develop a Contingent Program of Support
- To contribute to and maintain HQ reporting framework / communication protocols
- To monitor and uphold HQ Codes of Conduct and #TeamQLD behaviour standards:
<http://hockeyqld.com.au/About-Us/TeamQLD>

Reporting Framework



Role

General

- In relation to the Contingent, responsibilities are to track team data and analyse the data to develop insights to share with coaching staff
- In relation to individual teams, responsibilities are to track players and set plays to provide information to individual Coaches and Coaching Coordinator to inform team coaching strategies
- To provide video recordings of matches/set plays as requested by individual Coaches and Coaching Coordinator
- Statisticians and Videographers may but are not expected to provide electronic equipment

Pre-Championship

- Contact Coaching Coordinator to develop a support plan for Coaches
- Contact all appointed Coaches to offer support and source information as requested
- During Club matches, practise data gathering and analysis using Coaches statistical formats
- Establish statistician partnerships within Contingent for National Championships

During Championship

- Work closely with Contingent Leader and Coaching Coordinator to support #Team Qld goals
- Liaise with Coaching Coordinator and Statistician Team to develop a support program for teams/Coaches
- Establish the requirements of each Coach
- Attend matches to record data and provide feedback to Coaches in a timely manner
- Make regular contact with all Coaches
- Attend as many Qld games as possible, with the option of one or two REST DAYS
- In the event of any misconduct or discord within the Contingent, refer the matter to the Coaching Coordinator and Contingent Leader for advice and direction

Post Championship

- Provide a report to Coaching Coordinator and HQ Community Hockey Manager within fourteen (14) days
- Submit any unforeseen expenses prior to the HQ Women's Master Committee for approval

Accommodation and Travel Arrangements

- The role of Statistician is a self-funded position
- Statisticians must join the Contingent at the Contingent Assembly date and time
- Statisticians may stay in the Contingent accommodation
- During the event transport to and from the hockey venue will be provided by teams from the Contingent accommodation only