



**14 - 18 JANUARY
2023**



THE SAILORS' CLUB | ROYAL BRIGHTON YACHT CLUB

Sailing Instructions

Incorporates the 2023 Australian Para Sailing Championships

Host Club: Royal Brighton Yacht Club

16 January 2023 @ 0855 hrs

Organising Authority: Royal Brighton Yacht Club (RBYC)

With support from Victorian partner clubs:

Black Rock Yacht Club (BRYC) and Mordialloc Sailing Club (MSC)

1 RULES

- 1.1 The regatta will be governed by the rules as defined in the Racing Rules of Sailing (RRS).
- 1.2 The Australian Sailing Special Regulations, Part 2 Off the Beach Boats will apply.
- 1.3 RRS Appendix P – Special Procedures for RRS 42 will apply as changed by SI's 15.1 and 15.3.
- 1.4 RRS Appendix T – Arbitration will apply.

2 CHANGES TO SAILING INSTRUCTIONS

- 2.1 Changes to the format or schedule of races will be posted on the [Official Notice Board](http://www.sailmelbourne.com.au) www.sailmelbourne.com.au by 20:00 hrs on the day before it will take effect and any change to the sailing instructions will be posted before 09:00 hrs on the day it will take effect.
- 2.2 Any reassignment of classes to course areas will be posted before 09:00 hrs on the day it will take effect, or if flag AP is displayed ashore, 30 minutes before flag AP for that class is removed.
- 2.3 When any SI Addendum is changed, an updated version of it will be posted on the Official Notice Board.

3 COMMUNICATION TO COMPETITORS

The [Official Notice Board](http://www.sailmelbourne.com.au) (ONB) will be an online notice board located at www.sailmelbourne.com.au. All protests, scoring enquiries, equipment and crew change requests will be submitted via the online notice board and resulting notices posted online.

4 SIGNALS MADE ASHORE

- 4.1 Signals made ashore will be displayed at the flag masts at Royal Brighton Yacht Club boat park.
- 4.2 When flag AP is displayed ashore, '1 minute' is replaced with 'not less than 30 minutes' in the race signal AP. This changes race signal AP.
- 4.3 **[DP]** Flag AP over H displayed ashore means 'Boats shall not leave the harbour. Wait for further instructions.' This adds to Race Signals.
- 4.4 Visual signals made ashore may be posted on the [Official Notice Board](http://www.sailmelbourne.com.au).

5 [DP] CODE OF CONDUCT

Competitors and support persons shall comply with reasonable requests from race officials.

6 SCHEDULE OF RACES

- 6.1 The total number of races scheduled is as per the Event Schedule NOR Attachment A:
- 6.2 The daily race schedule and the scheduled time of the warning signal for the first race is shown in SI Addendum B.
- 6.3 The warning signal for each succeeding race will be made as soon as practicable after the completion of the previous race.

6.4 To alert boats that a race or sequence of races will begin soon, the orange starting line flag will be displayed with one sound for at least five minutes before a warning signal is displayed. This changes RRS Race Signals.

6.5 No warning signal will be made after 1600 on 18 January 2023.

7 FORMAT OF RACING

The format is a Single Series. If the race committee deems it necessary to split a class into fleets, then separate instructions will be issued.

8 RACING AREAS

See SI Addendum A.

9 CLASS FLAGS

See SI Addendum D

10 THE COURSES

10.1 The diagrams in SI Addendum D show the courses, the course designations, the order in which marks are to be passed, and the side on which each mark is to be left.

10.2 No later than the warning signal, the race committee signal vessel will display the course designation and may display the approximate compass bearing of the first leg.

10.3 If one of the gates marks is not laid, then the laid mark shall be left to port.

11 MARKS

See SI Addendum D.

12 THE START

12.1 Class fleets may be started in any order, and some class fleets may be started together.

12.2 The starting line will be between a staff displaying an orange flag on the race committee vessel at the starboard end and either:

a) the course side of the port-end inflatable starting mark, or

b) a staff displaying an orange flag on the race committee vessel at the port end.

12.3 **[DP]** Boats whose warning signal has not been made shall avoid the starting area during the starting sequence for other classes. The starting area is defined as a rectangle 50 meters from the starting line and marks in all directions.

12.4 A boat that does not start within 4 minutes after her starting signal will be scored Did Not Start without a hearing. This changes RRS 35, Appendix A5.1 and Appendix A5.2.

12.5 **[DP]** iQFOiL/Windfoil Open Only. The race committee may signal that boards shall sail on a specific tack during the 10 seconds before and 10 seconds after the starting signal is made, by displaying a green flag for starboard tack or a red flag for port tack, before or with the warning signal.

- 12.6 iQFOiL/Windfoil Open/KiteFoil/races will be started by using the following signals. Times shall be taken from the visual signals - the absence of a sound signal shall be disregarded.

Minutes before starting signal	Visual signal	Sound signal	Means
3	<i>Class flag</i>	<i>One</i>	<i>Warning signal</i>
2	<i>P, U, or black flag</i>	<i>One</i>	<i>Preparatory signal</i>
1	<i>Preparatory flag removed</i>	<i>One long</i>	<i>One minute</i>
0	<i>Class flag removed</i>	<i>One</i>	<i>Starting signal</i>

13 CHANGE OF THE NEXT LEG OF THE COURSE

To change the next leg of the course, the race committee will lay a new mark (or move the gate or move the finishing line) and remove the original mark as soon as practicable. When in a subsequent change a new mark is replaced, it will be replaced by an original mark.

14 THE FINISH

- 14.1 The finishing line will be between a staff displaying a Blue flag on the race committee vessel and either:
- the course side of the nearby inflatable finishing mark, or
 - a staff displaying a Blue flag on the nearby race committee vessel.
- 14.2 **[DP]** Boats finishing shall keep clear of boats about to start where reasonably practicable

15 PENALTY SYSTEM

- 15.1 For the 49er, 49er FX, 29er, iQFOiL, Windfoil Open, Hansa 303 and Liberty classes, RRS 44.1 and RRS P2.1 are changed so that the Two-Turns Penalty is replaced by the One-Turn Penalty.
- 15.2 RRS Appendix P will apply as changed by Instructions 15.1 and 15.3.
- 15.3 RRS P2.3 will not apply and RRS P2.2 is changed so that it will apply to any penalty after the first penalty.
- 15.4 **[NP]** Denotes that a breach of this rule will not be grounds for a protest by a boat. This changes RRS 60.1(a).

- 15.5 **[SP]** Denotes a rule for which a standard penalty will be applied by the race committee without a hearing. A list of these breaches and the associated standard penalties will be posted on the Official Notice Board. However, the race committee may protest a boat when they consider the standard penalty to be inappropriate. A boat that has been penalised with a standard penalty can neither be protested for the same incident by another boat nor can another boat request redress for this race committee action. This changes RRS 60.1, 63.1 and Appendix A5.

16 TIME LIMITS AND TARGET TIMES

- 16.1 See SI Addendum D.
- 16.2 If no boat has passed Mark 1 within the Mark 1 Time Limit the race may be abandoned. Failure to meet the target times will not be grounds for protest. This changes RRS62.1 (a),
- 16.3 Boats failing to finish within the time stated in the Finish Window after the first boat starts, sails the course and finishes may be scored Did Not Finish. This changes RRS 35, A5.1 and A5.2.

17 HEARING REQUESTS

- 17.1 The Organising Authority has appointed an International Jury for this event.
- 17.2 Protests shall be submitted via the online notice board.
- 17.3 For each class, the protest time limit is 60 minutes after the last boat has finished the last race of the day or the race committee signals no more racing today, whichever is the later.
- 17.4 Notices will be posted no later than 30 minutes after the protest time limit to inform competitors of hearings in which they are parties. Hearings will be held at RBYC Committee Room beginning at the time posted. Hearings may be scheduled to begin up to 30 minutes before the end of protest time.
- 17.5 Notices of protests by the race committee, technical committee or jury will be posted to inform boats under RRS 61.1 (b).
- 17.6 A list of boats that have been penalized under Appendix P for breaking RRS 42 will be posted.
- 17.7 On the last scheduled day of racing, a request for reopening a hearing shall be delivered;
- within the protest time limit if the requesting party was informed of the decision on the previous day;
 - no later than 30 minutes after the requesting party was informed of the decision on that day. This changes RRS 62.2.

18 SCORING

- 18.1 Three races are required to be completed to constitute a series.
- 18.2 When fewer than five (5) races have been completed, a boat's regatta score shall be the total of her race scores.
- 18.3 When five (5) or more races have been completed, a boat's regatta score will be the total of her race scores excluding her worst score.
- 18.4 Scoring for the Australian Para Championships will be drawn from the overall fleet results for the open fleets in the 2.4mR, Hansa 303 one-person, Hansa two-person and Liberty.
- 18.5 iQFOil / WindFoiling – Slalom Racing
- All competitors may be assigned together for each slalom race.
 - Two slalom races are required on the one day to complete a slalom round.
 - Points scored in those races will determine the competitors overall place in that round. The round will be abandoned and may be re-sailed on another day if fewer than two races are completed on the one day.
 - More than one round may be completed on any day.

- e) The scoring of one slalom round is equal to that of one course race and is treated as that when determining the competitor's overall regatta score.

18.6 IKA KiteFoil / -WingFoil only. There will be one discard after every five (5) races that are completed and scored.

19 [NP] SAFETY REGULATIONS

19.1 **[SP]** Competitors shall wear personal flotation devices in accordance with NoR1.1 at all times while afloat, except briefly while changing or adjusting clothing or personal equipment.

19.2 Numbered bibs will be provided by the organising authority for the WingFoil and Kite competition. Bibs shall be collected from the Race Management Representative at the Beach, worn at all times while racing and returned to the Race Management Representative no later than 30 minutes after the last finisher in, or abandonment of, the last race of the regatta.

19.3 Boats not leaving the harbour for a scheduled race shall promptly use the electronic sign on/off system by selecting "Not Sailing Today".

19.4 **[SP]** Before leaving to race on each scheduled racing day, a crew shall sign-on electronically using the online sign on/off system.

19.5 **[SP]** After returning to shore on each scheduled racing day, a crew shall sign-off electronically using the online sign on/off system within the protest time limit.

19.6 Instructions for use of electronic sign on/off system:

- a) Competitors shall provide a contact mobile phone number on the entry system.
- b) Competitors will receive a text message prior to the first race containing a link to the sign on system.
- c) Prior to leaving the shore, competitors shall click on the link, select the "Sign on/off" link in the menu and select either "Sign on" or "Not Sailing Today".
- d) On returning to shore after racing, competitors shall click on the "Sign Off" link.
- e) If a competitor is having issues with the sign on/off please call 0422 952 711 and the regatta office will manually sign you on/off.

19.7 **[DP]** A boat that retires from racing shall notify the race committee before leaving the racing area, or if that is not possible, shall notify the race office as soon as possible after returning ashore and shall complete a retirement declaration in the online notice board before the expiry of the protest time limit.

19.8 **[DP]** Boats shall not sail into other course areas whilst the other course areas are racing. Boats not racing shall remain clear of boats that are racing and official boats.

19.9 Race Management VHF Channels – See SI Addendum D.

19.10 **[DP]** Race officials and race committee vessels may retrieve boat crews and return them to their boats for safety reasons. The sail number of a boat which receives outside help will be notified to the Race Committee with details of the incident and a hearing may be held (if required) to determine any penalty. This changes RRS 41.

20 [DP] REPLACEMENT OF CREW OR EQUIPMENT

20.1 Substitution of competitors will not be allowed without prior written approval of the race committee via the ONB and shall comply with any restrictions in the Notice of Race.

20.2 Substitution of skippers will not be allowed after close of Registration for the applicable class.

- 20.3 Substitution of damaged or lost equipment will not be allowed unless approved by the race committee. Requests for substitution shall be made to the race committee at the first reasonable opportunity via the online notice board. When equipment is substituted during a series of races on the same day, the request shall be made before the protest time limit expires on the day via the online form.

21 [DP] [NP] EQUIPMENT AND MEASUREMENT CHECKS

Equipment may be inspected at any time for compliance with the class rules and sailing instructions. When instructed by a member of the technical committee, a boat shall proceed immediately to a designated area for inspection.

22 OFFICIAL VESSELS

- 22.1 Official vessels will be marked as follows:

Equipment Inspection	Flag with letter M or Measurer
Judges	White Flag with letter J
Media	White Flag with letter M
Race Committee	White flag with RBYC crest
Rescue	White flag with RBYC crest
PRO	Flag with letters PRO

- 22.2 Actions by official vessels, drones or helicopters shall not be grounds for requesting redress by a boat. This changes RRS 60.1 (b).

23 [DP] [NP] SUPPORT TEAMS

- 23.1 Team leaders, coaches and other support personnel shall stay a minimum of 50m outside areas where boats are racing from the time of the preparatory signal for the first class to start until all boats have finished or retired or the race committee signals a postponement, general recall or abandonment unless assistance has been requested by the race committee.

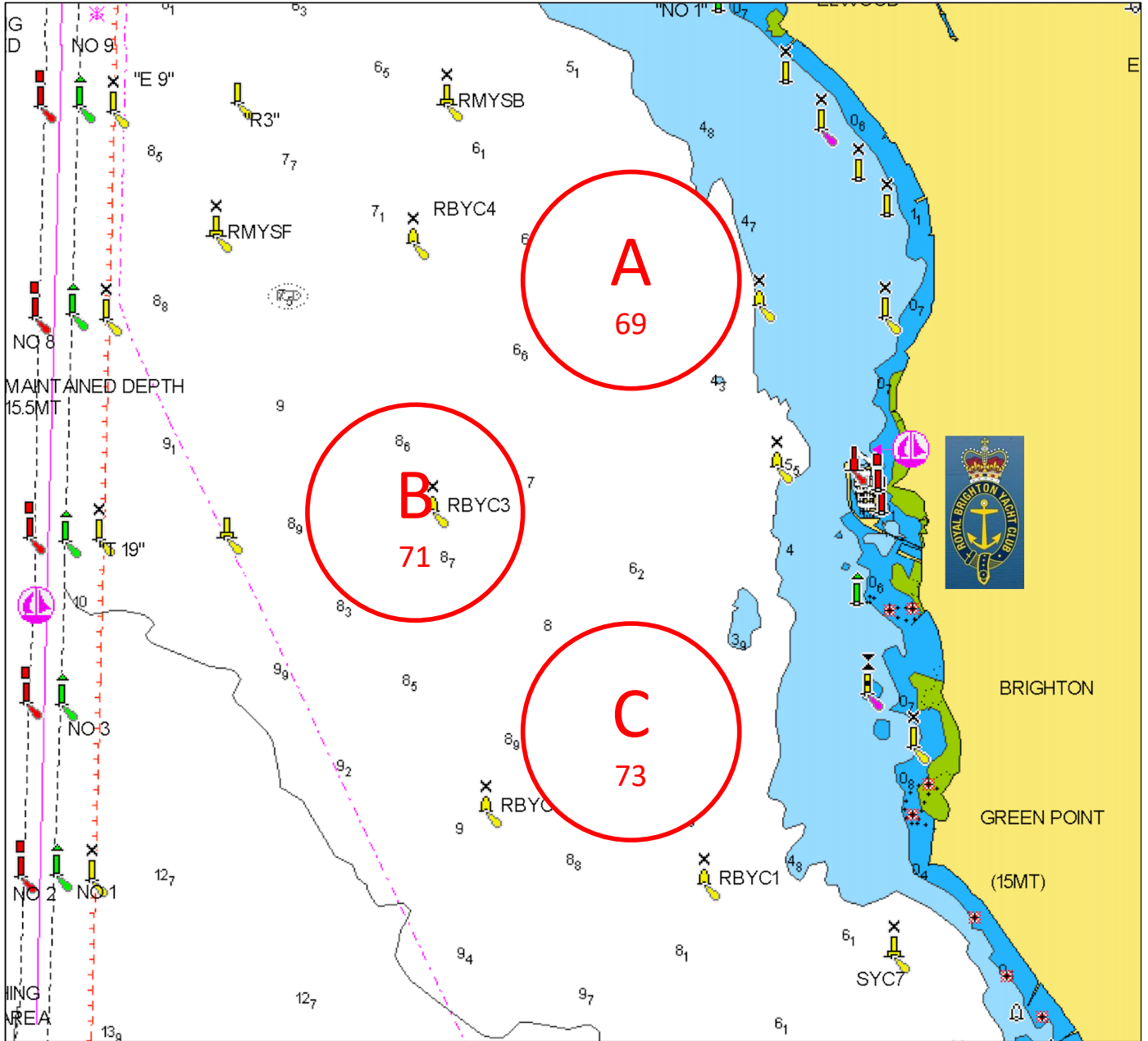
- 23.2 Support Vessel Regulations are detailed on the [ONB](#).

24 [DP] PARA CLASSES HAUL OUT RESTRICTIONS

Para Classes boats shall not be hauled out during the event except with and according to the terms of prior written permission of the race committee.

COURSE AREAS

SI Addendum A



Course diagram is not drawn to scale.

SCHEDULE OF RACES

SI Addendum B

Will be displayed on the [Official Notice Board](#)

- RMT: Race Management Team refers to the club running the course
Black Rock Yacht Club (BRYC)
Mordialloc Sailing Club (MSC)
Royal Brighton Yacht Club (RBYC)
- Races: No. of races scheduled
- Warning: First race of the day
- Course: Location of race course – refer to SI Addendum A
for course locations

QR Code – Official Notice Board



Standard Penalties [SP]

SI Addendum C

In accordance with NOR 1.10 and SI 15.5, the Race Committee will apply the following Standard Penalties:

SI	Safety	
19.1	Failure to wear a Life Jacket device	First Offence four points added to the race when identified, but no worse than DNF. Subsequent offences four points.
19.4 & 19.5	Failure to comply with sign-on/off requirements	First offence: four points added to the first race of the day for failing to sign on, four points added to the last race of the day for failing to sign off, but no worse than DNF. Subsequent offences four points.

ALPHA Course – VHF 69

SI Addendum D

Classes

Class	Class Insignia	B'ground Colour	Finish Time Limit	Mark 1 Time Limit	Finish Window	Target Time
ILCA 4	ILCA	Green	75	20	15	50
ILCA 6	ILCA	Yellow	75	20	15	50
ILCA 7	ILCA	White	75	20	15	50
2.4mR	2.4mR	White	60	25	15	40
Hansa 303 1 pax	Hansa	White	60	25	15	40
Hansa 303 2 pax	Hansa	White	60	25 </td <td>15</td> <td>40</td>	15	40
Liberty	Liberty	Purple	60	25	15	40

Description of Marks

Start pin	Orange buoy or race vessel
Finish pin	Blue buoy
Mark 1i	Yellow buoy
Mark 1o	Orange buoy
Mark 2i	Yellow buoy
Mark 2o	Orange buoy
Marks 3P & 3S	Orange buoy
Marks 4P & 4S	Orange buoy
Mark 5	Orange buoy

Courses

ILCA 4

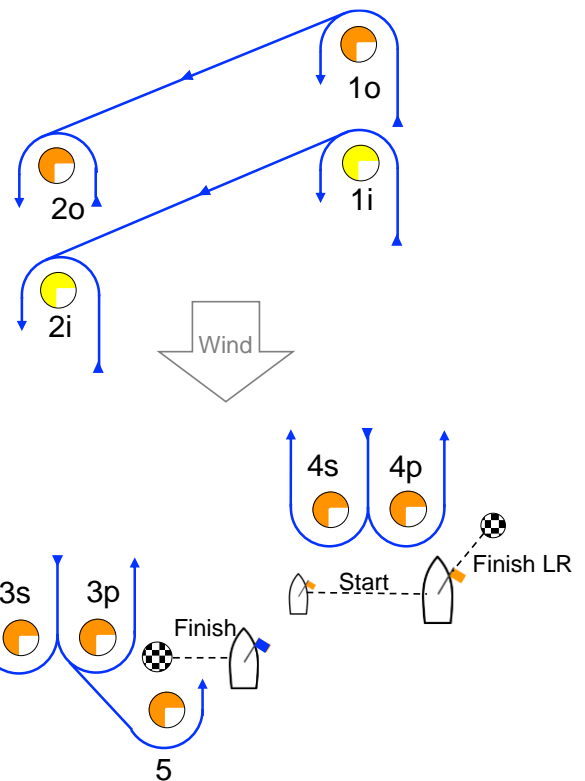
Signal	Mark Rounding Order
I2	Start – 1i – 4s/4p – 1i – 2i – 3p – 5 – Finish
O2	Start – 1i – 2i – 3s/3p – 2i – 3p – 5 – Finish

ILCA 6, ILCA 7

Signal	Mark Rounding Order
I2	Start – 1o – 4s/4p – 1o – 2o – 3p – 5 – Finish
O2	Start – 1o – 2o – 3s/3p – 2o – 3p – 5 – Finish

2.4mR, Hansa, Liberty

Signal	Mark Rounding Order
LR2	Start – 1i – 4s/4p – 1i – 4p – Finish
LR3	Start – 1i – 4s/4p – 1i – 4s/4p – 1i – 4p – Finish



BRAVO Course – VHF 71

SI Addendum D

Classes

Class	Class Insignia	B'ground Colour	Finish Time Limit	Mark 1 Time Limit	Finish Window	Target Time
49er & 49er FX	49er	Blue	50	20	10	30
470	470	Blue	60	25	15	40
29er	29er	Red	50	20	10	30
RS100	RS100	White	60	15	15	45
Tasar	Tasar	White	60	15	15	45

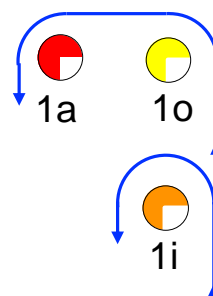
Description of Marks

		Change Mark
Start pin	Race vessel	
Finish pin	Black White check buoy	
Mark 1o – 49er/FX	Yellow buoy	Yellow buoy with black band
Mark 1i – RS100, Tasar, 29er	Orange buoy	Orange buoy with black band
Mark 1a	Red buoy	
Marks 4P & 4S	Yellow buoy	

Courses

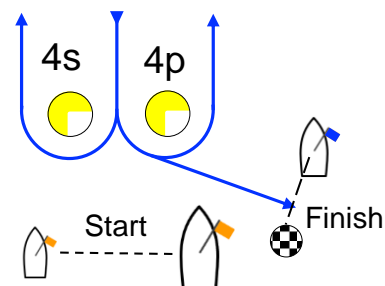
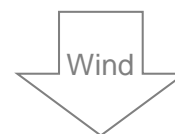
49er, 49er FX, 470

Signal	Mark Rounding Order
LRA2	Start – 1o – 1a – 4s/4p – 1o – 4p – Finish
LRA3	Start – 1o – 1a – 4s/4p – 1o – 4s/4p – 1o – 4p – Finish



RS100, Tasar

Signal	Mark Rounding Order
LR2	Start – 1i – 4s/4p – 1i – 4p – Finish
LR3	Start – 1i – 4s/4p – 1i – 4s/4p – 1i – 4p – Finish



CHARLIE Course – VHF 73

SI Addendum D

Classes

Class	Class Insignia	B'ground Colour	Finish Time Limit	Mark 1 Time Limit	Finish Window	Target Time
IKA Kitefoils	Kite	White	20	10	10	10
iQFOiL	Code Flag T		30	10	10	12-15
Windfoil Open	Code Flag W		30	10	10	12-15

Description of Marks

IKA KiteFoil / iQFOiLs / WindFoil Open – Windward/Leeward

Start pin	Orange buoy
Finish pin	Black White check buoy
Mark 1	Pink buoy
Marks 4P & 4S	Pink buoy

Signal	Mark Rounding Order
LR1	Start – 1 – 4p – Finish LR
LR2	Start – 1 – 4s/4p – 1 – 4p – Finish LR
LR3	Start – 1 – 4s/4p – 1 – 4s/4p – 1 – 4p – Finish LR

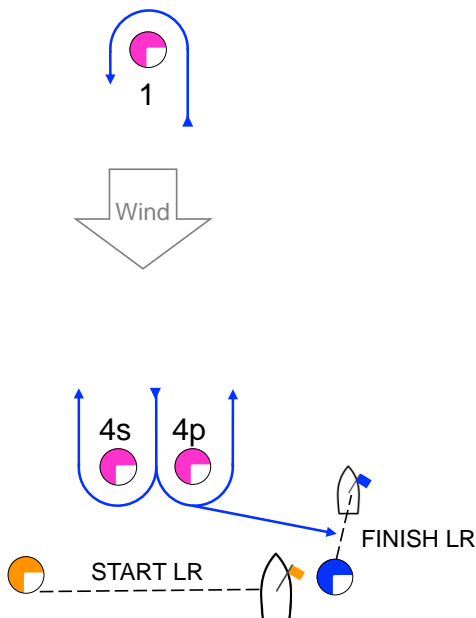
iQFOiL / Windfoil Open - Slalom

Start pin	Black buoy
Finish Pin	Black & White check buoy
Marks A, B & C	Yellow buoy

Signal	Mark Rounding Order
S4	Start – A – B – C – Finish SS

Courses V3

Kites, iQFOiL & WindFoil W/L



iQFOiL & WindFoil Slalom

