



Primary All Schools Cross Country Championships
Symmons Plains Motorway, Launceston Tasmania
Tuesday 22nd June 2021

Venue

What: 2021 Primary All Schools Cross Country Championships

Date: Tuesday 22nd June 2021

Location: Symmons Plains Raceway, Launceston [Google Maps](#)

Car Parking & Venue Access:

This year there are two main entry/access points to Symmons Plains Raceway.

Vehicle Access

Vehicles traveling from the South can enter via Entry Gate A (Main Entrance)

All Coaches/Buses traveling from the North and South must enter via Entry Gate A (Main Entrance)

Vehicles traveling from the North can enter via Entry Gate B (Side Entrance)

***Vehicle Parking within the venue will open at 7.30am and close at 10.30am. Roads will be re-opened at 1.30pm.**

Please Note:

Full internal road closures will be in place from 10.30am. NO vehicles will be permitted inside the venue. After this time vehicles will be asked to park within Overspill Car Park 4 (Main Entrance) and Overspill Car Park 5 (Entry Gate D). See maps for details.

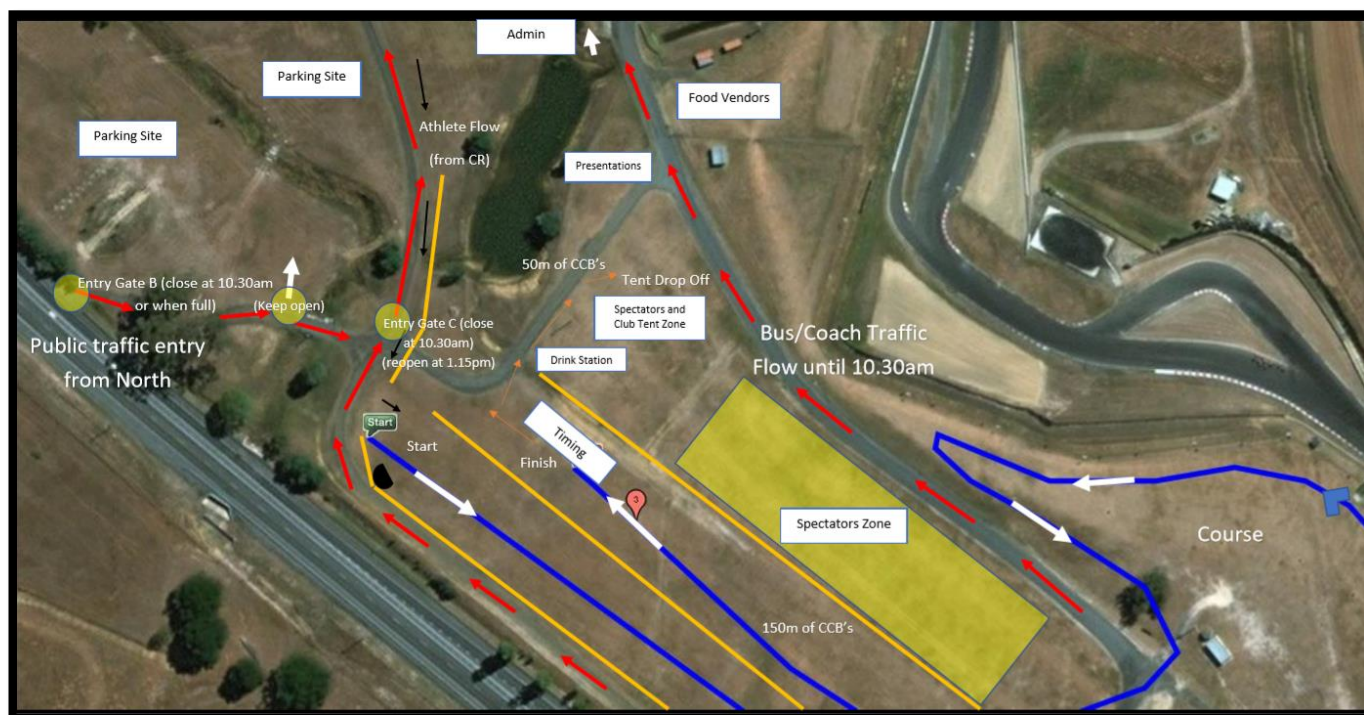
Please be aware that there is limited parking available, and the venue is limited to 5000 patrons therefore we ask that spectators are restricted to 1 spectator per participant. We apologise for the inconvenience however this is to comply with State Government Tier 3 permit approval of up to 5000 people within a venue at one time.

Vehicles parking on the lower sections including the Pit Buildings of Symmons Plains Raceway will not be permitted to exit the venue via the main road until it is reopened at 1.30pm. Vehicles seeking an early exit should enter via the main entrance at Entry Gate A or use the Overspill Car Park 5 available to them.

Entry Gate A(Buses)/Access to Overspill Car Park 4:



Entry Gate B & C:



Overspill Car Park 5 Entry (Entry Gate D)



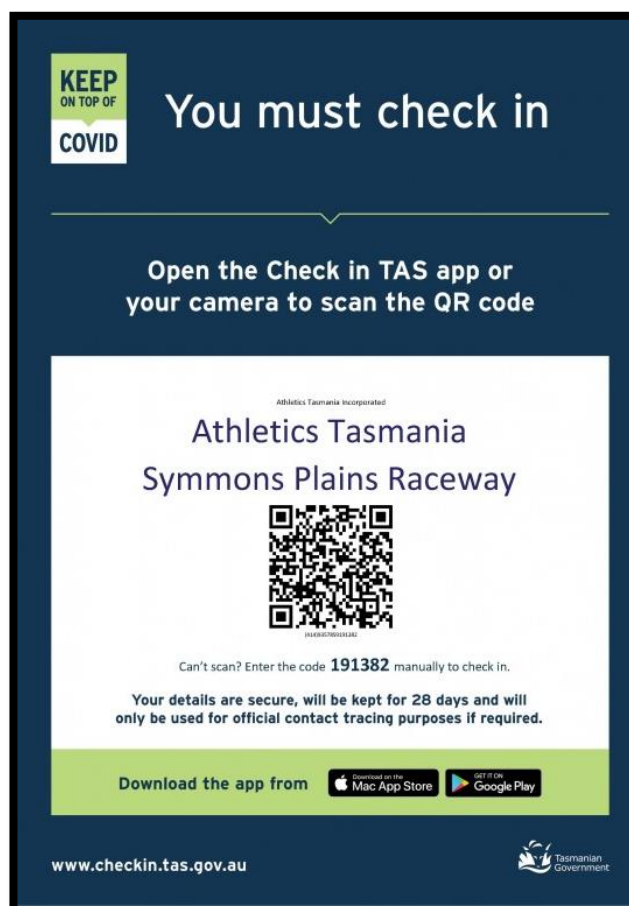
We encourage all patrons travelling to the event to give themselves adequate time as there will be mandatory QR Scanning set up on arrival. To assist us, all patrons (Excluding school buses) should simply scan the code before entering the venue and show the stewards proof of check-in on arrival and this will allow vehicles to flow more efficiently when entering. See overleaf for more details on Venue Check-in.

Venue Check-In

All adults must complete the required COVIDsafe Venue Check-In process on entry. Please see below QR Scan Code for Symmons Plains Raceway. You can scan this code before you arrive at the venue however you must show proof of scanning on arrival. (See QR Code below)

Manual check in will also be available however may result in further delays when entering the venue.

School buses will be excluded from venue checks as these will be done pre-event via the entry list log. All adults arriving on a school bus/coach will be required to 'check in' using the QR Code and TAS APP.



Schools must still collect their race packs/bibs from the Administration Area. **Due to the nature of the event, event start times will not be delayed for late schools or athletes.**

Due to the high volume of traffic please expect delays entering and exiting Symmons Plains Raceway. Please make sure you read the information above to familiarise yourself with on the day processes.

Competition

Safety Advice

Part of the fun of cross-country events is the mass start and the opportunity to have a run outside over the natural terrain.

Due to the natural variation of the course, there is always the chance of athletes tripping over the terrain, or other athletes, due to their varying pace and concentration levels. We would like to make all students, parents and school representatives aware that this is all a part of the challenge of a Cross Country event. We do ask students to be aware of their surroundings and fellow competitors and expect them to act in a safe and responsible manner during the race.

Administration:

Please ensure you arrive early enough to collect team or individual race packs. Teachers or (nominated school representative) **MUST collect race packs no later than 40 minutes before the scheduled start time** for the athlete's event. Individual entrant's **MUST collect race packs no later than 40 minutes before the scheduled start time** for the athlete's event. These packs include the athlete bib and attached to the bib will be the timing chip. Athletes must wear this on the front of their torso, so it is visible to officials.

Timing Chips & Bibs:

Athletes will be issued with a timing chip and a bib to wear on the event day. These can be picked up at the administration area prior to the race start.

Timing chips **MUST** be worn as they are attached to the race bib. Please secure safety pins to the front of the athlete singlet. Please also make sure the correct athlete is given the correct bib.

NO BIB = NO TIME AND NO POINTS

On the Day Entries:

Late entries will only be available up until **one hour before the event start time** at the administration area. **A LATE ENTRY FEE OF \$50.00 will be charged.**

No cash or card payments will be accepted at the event, late entry fees will be charged to the entrant's school via invoice. This charge may then be passed back to the late entrant.

Athlete Eligibility:

Athletes must be age eligible primary school students enrolled at a government or private school/college or are engaged in approved home schooling on the day of competition. All competitors must wear their approved school athletic uniform during competition. If one is not available, competitors must wear a white singlet or top. Age of competitors will be taken as at 31 December 2021. **To compete in this competition athletes must be born in 2009, 2010, 2011 or 2012.**

School Teams:

Three runners constitute a scoring school team. There is no requirement to pre-nominate the three runners who make up a school's team(s). If there are more than three runners in the one event from the same school, the school's first three runners to finish will constitute the first team, the next three runners from that school will constitute the second team, and so on. To make up a team, all runners must be from the same school. **Composite teams are not permitted.**

Protest:

In the case of an athlete wishing to protest, please direct the athlete to the Chief Referee.

State Teams: (2021)

National Championships will not be conducted for 10, 11 or 12 year old's (primary school) in 2021. Athletics Tasmania will select a virtual representative team and publish the team on the Athletics Tasmania website after the event.

Timetable/Call up Schedule:

All athletes MUST report and assemble at the Call Room no later than 20 minutes prior to the race start. **Only competitors will be permitted in the Call Room.**

All rules will be explained to athletes within the Call Room. Athletes who do not comply with call up times may be subject to disqualification. We ask that School Team Managers assist officials in making sure athletes are prepared and ready to compete before entering the Call Room.

Primary Schools Cross Country Call Room (Schedule as at 17.06.20)

11:10am	Pre-Race call up - Boys 9 2km (Marshalling cut off)	Announcer/Call Room
11:30am (EVENT 1)	9 years boys 2km commences	Starter Wim Vaessen
11:25am	Pre-Race call up - Girls 9 2km (Marshalling cut off)	Announcer/Call Room
11:45am (EVENT 2)	9 years girls 2km commences	Starter Wim Vaessen
11:40am	Pre-Race call up - Boys 10 years 2km (Marshalling cut off)	Announcer/Call Room
12:00pm (EVENT 3)	10 years boys 2km commences	Starter Wim Vaessen
11:55am	Pre-Race call up - Girls 10 years 2km (Marshalling cut off)	Announcer/Call Room
12:15pm (EVENT 4)	10 years girls 2km commences	Starter Wim Vaessen
12:10pm	Pre-Race call up - Boys 11 years 3km (Marshalling cut off)	Announcer/Call Room
12:30pm (EVENT 5)	11 years boys 3km race commences	Starter Wim Vaessen
12:20pm	Pre-Race call up - Girls 11 years 3km (Marshalling cut off)	Announcer/Call Room
12:40pm (EVENT 6)	11 years girls 3km race commences	Starter Wim Vaessen
12:35pm	Pre-Race call up - Boys 12 years 3km (Marshalling cut off)	Announcer/Call Room
12:55pm (EVENT 7)	12 years boys 3km race commences	Starter Wim Vaessen
12:45pm	Pre-Race call up - Girls 12 years 3km (Marshalling cut off)	Announcer/Call Room
1:05pm (EVENT 8)	12 years girls 3km race commences	Starter Wim Vaessen

Medal Presentations:

Medal presentations will be made after each event in a designated and fenced off area. Physical presentation of medals will not occur, and recipients will collect medals from the dais.

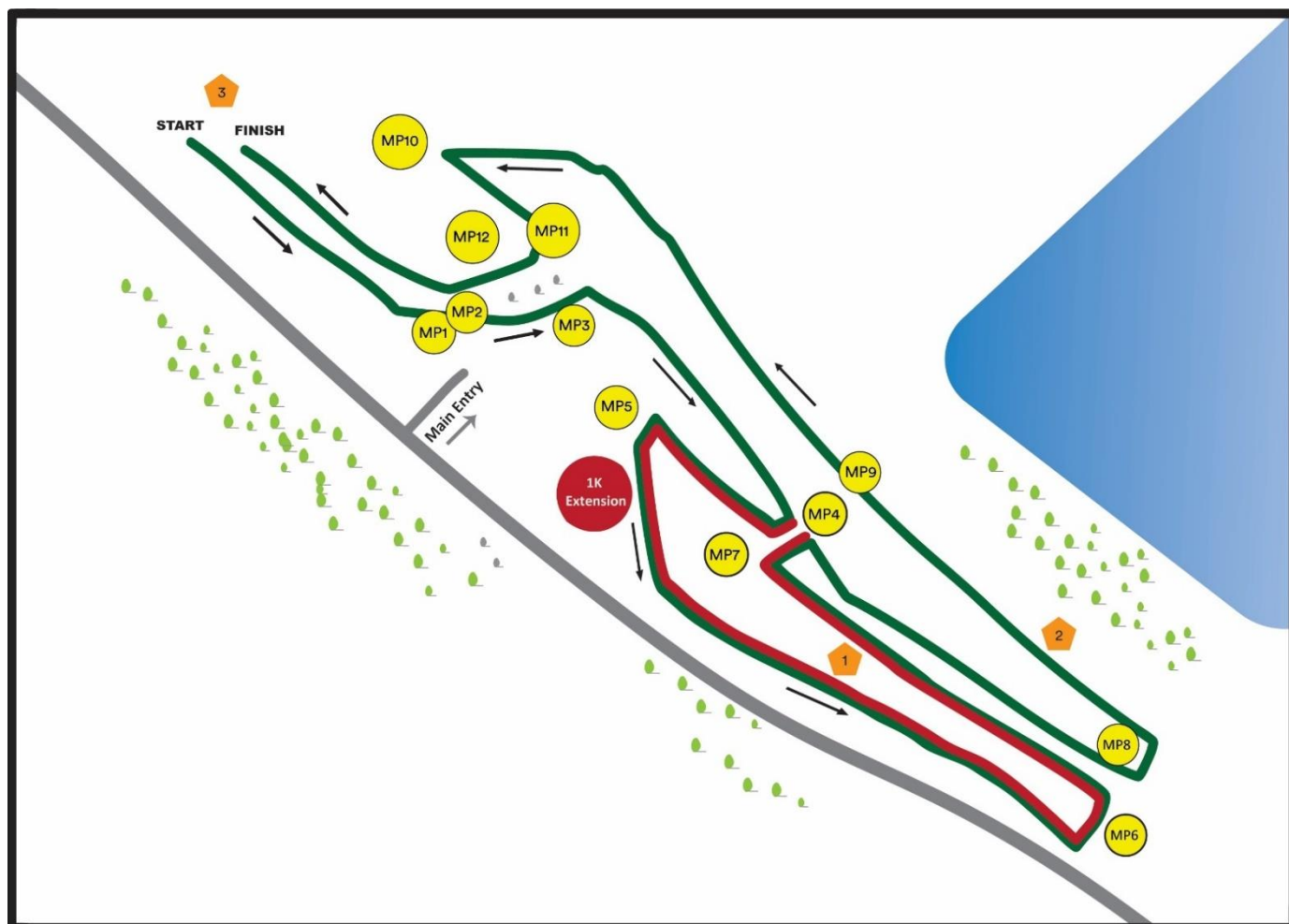
Only those individuals receiving medals will be permitted in the presentation zone. Hand sanitiser will be available within this area along with physically distance signage.

Announcements will be made recognising each performance and individuals will collect medals placed on the dais prior to the announcement. As soon as the presentation is complete, individuals will leave the presentation zone.

Team medals will be presented/sent out to Schools at a later date once all results are compiled and scrutinised.

Course Map:

The course map can be found below. See above table for distances. We do ask that athletes remain off the course when warming up. An allocated warm up area will be situated adjacent to the Call Room.



Please Note: Changes may occur to the course start/finish areas as well as marshal points which is dependent on the number of volunteers we have on the day.

Site Plan:



Toilet Facilities:

Toilet facilities are available in three different areas at Symmons Plains Raceway. These will be cleaned and sanitised throughout the day.

Looking after Symmons Plains:

We are very grateful to Symmons Plains Raceway for the opportunity to compete at the venue. Schools are asked to remind their members of the following:

- Please respect the infrastructure and adhere to the signage within the grounds.
- Park only in designated parking bays.
- Adhere to all COVIDsafe measures applied by venue and staff on the day.
- Take home all rubbish so that the venue is left as you found it.
- Make sure your athletes leave the toilet blocks in a respectable state.
- Adhere to marshals' and officials' directions.
- Stay safe and have an enjoyable experience.
- **No Dogs** are allowed on site.

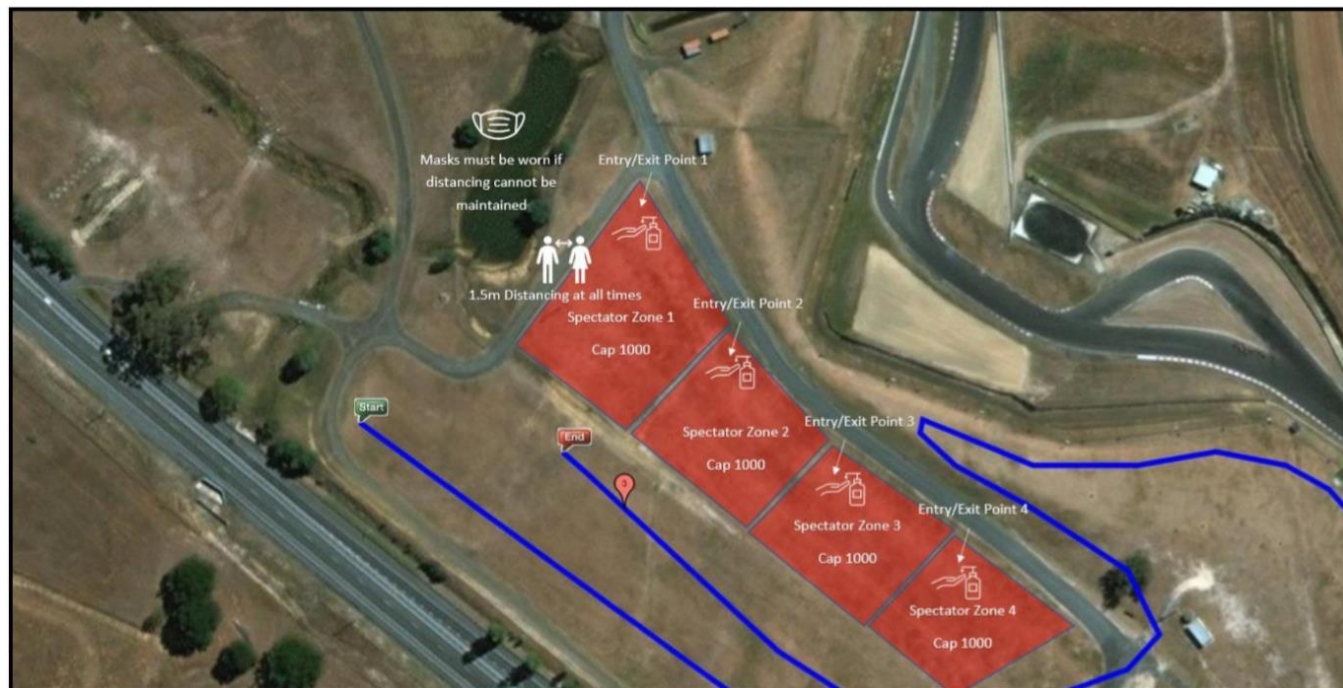
General

School Tents:

There will be four designated spectator zones with schools given priority to Zone 1 as shown below. Each Zone will clearly display density limits and be monitored by Event Staff.

Hand sanitiser will be available in each Zone. Patrons are reminded to maintain physical distancing at all times and regular public announcements will be made throughout the day re-enforcing physical distancing.

There are additional viewing areas for spectators around the venue and patrons are reminded when accessing these areas to - Avoid queues and - Maintain good hand hygiene and - Observe physical distancing at all times.



Additional COVIDsafe Measures:

Spectators will not have access to the start/finish line. Spectators are permitted around the course, which will be clearly marked and appropriate barriers (crowd control and rope and step downs) in place.

The start line will be 35m wide, with sufficient space for competitors to spread out, however based on the timing of each event and process from CALL ROOM, competitors time within this area is minimised before the start of each race.

Communications to participants around social distancing will include.

- COVID Event and Operations Plan
- Athlete and Schools Pre-Event information
- Website
- Event signage throughout the event precinct
- Social media and
- On the day announcements using the PA system

We do ask if you are feeling unwell or experienced or experiencing any flu like symptoms to stay at home.