



2023/2024 Smash Hit Program Polo Top Sizing Chart

Name: _____ Polo Top Size: _____

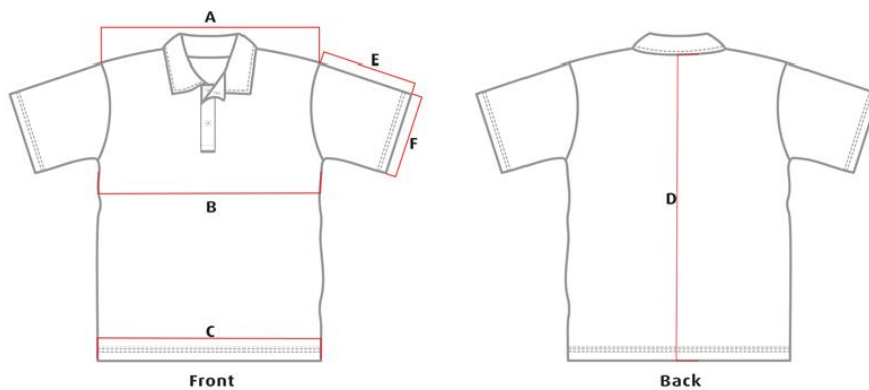
As part of the 2023/2024 Smash Hit registration fee of \$100.00, all junior players will receive a polo top. Please record your preferred size and return this sheet to the Smash Hit Coordinator (Eastside – Kay Crowell / Southside – Lenore Roder).



Front

Back

Junior Size Chart Below



Front

Back

Measurements in 1.0 cm

Tolerance +/- 1.0 cm

| | 4Y | 6Y | 8Y | 10Y | 12Y | 14Y | 16Y |
|----------------|------|------|------|------|------|------|------|
| B. HALF CHEST | 38.0 | 40.0 | 42.0 | 44.0 | 46.0 | 48.0 | 50.0 |
| D. CENTRE BACK | 51.0 | 54.0 | 56.0 | 59.0 | 61.0 | 63.0 | 65.0 |

Adult Size Chart Below

Measurements in 1.0 cm

Tolerance +/- 1.0 cm

| | XS | S | M | L | XL | 2XL | 3XL | 4XL | 5XL |
|----------------|------|------|------|------|------|------|------|------|------|
| B. HALF CHEST | 51.0 | 53.0 | 56.0 | 58.0 | 61.0 | 65.0 | 69.0 | 73.0 | 77.0 |
| D. CENTRE BACK | 68.0 | 70.0 | 73.0 | 75.0 | 78.0 | 82.0 | 86.0 | 89.0 | 93.0 |