



**2024 JUNIOR INDOOR CHALLENGE  
EVENT GUIDE**

**U12 MIXED**

**V2 – 30/01/24**

*\*Any changes from previous versions will be made in red font\**



# TABLE OF CONTENTS

<b>EVENT DETAILS</b> .....	3
<b>AGE ELIGIBILITY</b> .....	3
<b>EVENT STRUCTURE</b> .....	3
UNDER 12 .....	3
<b>FIXTURE &amp; RESULTS</b> .....	4
<b>EVENT RULES &amp; REGULATIONS</b> .....	4
MATCH TIMINGS .....	4
EQUIPMENT .....	4
FACEMASKS (FOR PENALTY CORNERS) .....	5
GOALKEEPERS .....	5
<b>RULES OF INDOOR HOCKEY VIDEO</b> .....	5
<b>TEAM MANAGERS BRIEFING</b> .....	5
<b>TEAM MANAGER CONTACT DETAILS</b> .....	6
<b>TEAMS &amp; PLAYER ELIGIBILITY</b> .....	6
CROSS-OVER MATCH ELIGIBILITY .....	6
<b>ENTERING TEAM LISTS</b> .....	6
<b>TEAM STRUCTURE</b> .....	7
<b>USE OF PAPER TEAM SHEETS</b> .....	7
<b>ASSISTANCE WITH TECHNICAL BENCHES</b> .....	7
<b>OFFICIALS &amp; ROSTERING</b> .....	8
<b>FURTHER IMPORTANT INFORMATION</b> .....	8
UNIFORMS .....	8
TEMPORARY SUSPENSIONS .....	8
FIRST AID .....	8
CHANGEROOMS .....	8
MEDIA .....	9
MATCH & WARM UP BALLS .....	9
<b>VENUE ACCESS AND INFORMATION</b> .....	9
<b>CONTACT DETAILS</b> .....	10
<b>APPENDIX 1 – HV MEMBERSHIP INFORMATION</b> .....	12



## EVENT DETAILS

**Dates:** Saturday 3<sup>rd</sup> Feb & Sunday 4<sup>th</sup> Feb, 2024

**Venue:** Monash University – Recreation Hall (Monash Sport Building - 42 Scenic Boulevard, Clayton, Victoria)

## AGE ELIGIBILITY

**ALL participants must be born on or after 1<sup>st</sup> January 2011 in order to participate in this event.**

We use the 2023 age groups so that teams can retain similar team members as to what they had during the 2023 Indoor season.

## EVENT STRUCTURE

Teams will have the opportunity to play 5 matches across the course of the weekend get a taste of participating in an Indoor Hockey Tournament. There will not be any Finals or medals awarded at the end of the Event.

### UNDER 12

With 20 teams entered in the Under 12 Event, we have initially split the competition into 5 pools of 4 teams (as seen below). You will play all teams in your pool once for a total of 3 matches.

Pool A	Pool B	Pool C
Brunswick Hockey Club 1	Southern United Hockey Club	Brunswick Hockey Club 2
Waverley Hockey Club	KBH Brumbies Hockey Club 1	Essendon Hockey 2
Essendon Hockey 1	Footscray Hockey Club 1	Mentone Hockey Club
Knox Hockey Club	Euroa Hockey Club	Doncaster Hockey Club

Pool D	Pool E
KBH Brumbies Hockey Club 2	Footscray Hockey Club 2
Hawthorn Hockey Club	PEGS Hockey Club 1
Powerhouse & St Kilda Hockey Club	Altona Hockey Club
PEGS Hockey Club 2	Camberwell Hockey Club

From there, teams will be placed into new pools (seen below), based on their finishing position in their original pool. Each team will then play 2 matches against other teams in their new pool, as follows:

TEAM ID	Pool F	Pool G	Pool H	Pool I	Pool J
<b>a</b>	1st Pool A	1st Pool E	2nd Pool D	3rd Pool C	4th Pool B
<b>b</b>	1st Pool B	2nd Pool A	2nd Pool E	3rd Pool D	4th Pool C
<b>c</b>	1st Pool C	2nd Pool B	3rd Pool A	3rd Pool E	4th Pool D
<b>d</b>	1st Pool D	2nd Pool C	3rd Pool B	4th Pool A	4th Pool E

- Match #1
  - Team ID a vs Team ID b
  - Team ID c vs Team ID d
- Match #2
  - Team ID a vs Team ID c
  - Team ID b vs Team ID d

If the scores are level at the end of regular time in any of the matches, the result will be a draw.



## FIXTURE & RESULTS

Clubs can view the fixture [here](#). Any changes made to this fixture in the lead up to the event will be communicated to clubs via email.

HV will be utilising **RevSport** for all fixture, results and team lists during the Junior Indoor Challenge. We will not be utilising Altius like we had for the Indoor Club Championships.

Closer to the Event, fixtures will be published here - <https://www.hockeyvictoria.org.au/games/>. Once the Event is running, results can be viewed through that same link.

## EVENT RULES & REGULATIONS

Matches will be played in accordance with the most current version of the FIH Rules of Indoor Hockey and the Hockey Victoria Rules & Regulations except as stated otherwise in the Event Guide.

Please click [here](#) for the 2023 FIH Rules of Indoor Hockey (the most up-to-date version).

Please click [here](#) for the 2023 FIH Rules Briefing to accompany the FIH Rules.

### MATCH TIMINGS

Each match will consist of 2 x 15-minute halves, 2 minutes for half-time and approximately 8 minutes between matches to complete change-over of teams.

### EQUIPMENT

HV have imposed a number of **compulsory** items for the Junior Indoor Challenge and these include:

- Cloth tape under stick to assist in protecting the surface at each venue
- Shin pads
- Mouth guard
- Non-marking shoes
- A **FULL** protective glove
- An Indoor Hockey stick – **STRONGLY RECOMMENDED but not compulsory for this Event**

EXAMPLE OF A FULL  
PROTECTIVE GLOVE



NOT A FULL PROTECTIVE  
GLOVE - FINGER TIPS ARE  
EXPOSED





## FACEMASKS (FOR PENALTY CORNERS)

- In all age Junior age groups it will be mandatory for all field players involved in defending a penalty corner to wear a facemask. It is recommended that all players have their own facemasks for hygiene reasons.
- If a team does not have a sufficient number of face masks for all players that wish to defend the penalty corner, they will only be permitted to defend the penalty corner with their Goalkeeper and the number of field players that have a mask e.g. if they only have two face masks, the corner will be defended with the GK and two players wearing those masks.
- Please note that once the penalty corner is completed, the match will not stop for those players to be substituted back off. Teams must manage that as they would any other substitution.

## GOALKEEPERS

For the Junior Indoor Challenge, it is compulsory to have a fully kitted Goalkeeper.

### JUNIOR GOALKEEPERS RECEIVING CARDS

In an instant where a Goalkeeper receives a card the captain will serve the temporary suspension.

If the Captain is not on the court when the Goalkeeper receives a card, another player must be nominated to serve the temporary suspension.

If the Goalkeeper is the captain and they receive a card, another player must be nominated to serve the temporary suspension.

It should be noted that in instance where a Goalkeeper receives a card it will be recorded against the Goalkeeper (not the player who actually serves the temporary suspension).

## RULES OF INDOOR HOCKEY VIDEO

There has been a video produced for the Junior Indoor Challenge & Indoor Club Championships that provide explanation of some of the key Indoor Hockey rules. Please ensure you pass this link on to both players and coaches and strongly encourage them to watch it prior to the Event - [https://youtu.be/sFnYPvH\\_S7Q](https://youtu.be/sFnYPvH_S7Q)

This video also provides a very basic overview of what Indoor Hockey is for those that have not experienced it before - <https://youtu.be/-eSSMFk53ac>. Please also share that link with coaches and players.

## TEAM MANAGERS BRIEFING

The Team Manager Briefing will take place digitally. For the U12 JIC event, all teams must have a representative in attendance, and it is recommended that a coach attend as well.

The briefing will take place as follows:

**Date** – Tuesday, January 30<sup>th</sup>

**Time** – 7.00pm start

**Link to join** - [Click here to join the meeting](#)



## TEAM MANAGER CONTACT DETAILS

All competing teams must submit their team manager details through the following link:

<https://form.jotform.com/240098381674968>

This must be completed by **Friday 26<sup>th</sup> January 5:00pm.**

## TEAMS & PLAYER ELIGIBILITY

Further information in relation to the memberships required to participate in the 2024 Junior Indoor Challenge can be found in *Appendix 1 – HV Memberships Information* in this document.

***Please ensure that you read the information relating to memberships carefully as all players, team managers, coaches and officials will need either a playing or non-playing membership to participate in the Event. There is specific information in provided on that page on the website/in Appendix 1 - Appendix 1 – HV Memberships Information.***

### CROSS-OVER MATCH ELIGIBILITY

- There is no requirement to play a specific number of 1<sup>st</sup> stage pool matches to be eligible to participate in the 2<sup>nd</sup> pool stage
- The player just needs to be listed in the team list on Rev Sport prior to the Event commencing.

## ENTERING TEAM LISTS

For the 2024 Junior Indoor Challenge, we will be utilising Rev Sport as the competition management platform. This is the same as the 2023 Winter season and the 2023 Term 4 Indoor Competitions.

Hockey Victoria will set up the competitions and add the competing clubs to them. The club will then need to add the team manager to the team.

The club or the team manager will be responsible for adding players to their teams in Altius prior to the deadline below.

**Players & Team Staff must be added to the team in Rev Sport strictly by 9.00am Friday morning prior to their Event commencing.** If players are not added by this time, they will not be able to participate in the Event.

Team Managers will need to be a 2024 Hockey Victoria Member for their club to be able to add them as the Team Manager. If they do not intend to play or officiate in 2024, there is a non-playing membership which is \$0. There is further information on how to purchase this membership type in Appendix 1 of this document.



## TEAM STRUCTURE

To provide teams with maximum flexibility across the Event, HV will permit all teams to utilise up to fourteen players across the course of each Event. But, a maximum of twelve players can be named on a team sheet and utilised in any single match (for the round robin matches and any cross-over/classification matches).

Age group	Number of people
Players on the pitch	Six (6)
Max. Players on team sheet each match	Twelve (12)
Max. Players used across the event	Fourteen (14)
Max. Team Officials on Bench	Four (4)*
Max. people on bench during match	Ten (10)

\* For a team to have four (4) officials on the bench, these must be made up of the below;

- 1x Coach
- 1x Assistant Coach
- 1x Team Manager
- 1x Physiotherapist / Doctor / First Aid / Assistant Manager

## USE OF PAPER TEAM SHEETS

Upon arriving at the venue for the first time for the Event, the team manager will be required to report to the Tournament Director's office (maps provided below) and collect your paper team sheets.

You will then be required to mark the players who participated in the matches, goal scores, any cards and the final score. At the conclusion of the match the opposition team manager and two umpires will need to sign it. Once completed, please take it immediately to the Tournament Director so that the scores can be entered online on Rev Sport.

Please ensure that your completed and signed team sheets are handed to the Tournament Director at the end of every match so scores can be kept up to date online.

## ASSISTANCE WITH TECHNICAL BENCHES

The home (or first named) team on the fixture will be required to provide one volunteer to assist us with running the scoreboard/timeclock for each match.

We ask that this individual reports to the Tech Bench immediately upon the conclusion of the match prior and the Tournament Director will meet them there to provide them with instructions.



## OFFICIALS & ROSTERING

Hockey Victoria aims to roster **ALL** officials for the U12 JIC, but due to the condensed nature of the ICC & JIC events this year, we may require clubs to assist with the provision of officials.

Where HV have not been able to appoint an official on the roster (found [here](#) – to be finalised on Wednesday 30<sup>th</sup> January), it will be the responsibility of clubs to provide an official as follows:

- Where Umpire 1 has not been rostered, it will be the HOME TEAMS responsibility to provide 1x umpire
- Where Umpire 2 has not been rostered, it will be the AWAY TEAMS responsibility to provide 1x umpire

**In the event that you are required to provide an umpire, HV and the tournament officials will contact your team manager.**

We expect there to be a number of new officials this year, and we as a community must uphold the [Code of Conduct](#) and help nurture them on their journey. There will be absolutely zero tolerance for abuse towards officials, or any behaviour that contravenes the Code of Conduct.

## FURTHER IMPORTANT INFORMATION

### UNIFORMS

All members of the team are to wear the same uniform. The only exception to this is the Goalkeeper who is to wear a smock which is a different colour to that of the playing shirt. Numbers are recommended but not required for this event.

In instances of a uniform clash (determined by Tournament Director) the second named team shall wear an alternate uniform. ***All teams must have an alternate playing shirt and alternate socks.***

### TEMPORARY SUSPENSIONS

Any player temporarily suspended will spend that time located at the Technical Bench.

Green Card: 1 minute

Yellow Card: Minimum 2 minutes

Red Card: No further participation in the match. Any further match suspensions will be at the discretion of the Tournament Director.

### FIRST AID

Injury ice will be available at the Technical Bench as well as near the Tournament Directors Desk. Teams are encouraged to have their own first aid attendant and/or kit at the Championships though as there will not be first aid staff provided by Hockey Victoria.

### CHANGEROOMS

There are change room facilities at both venues, but it should be noted that they are shared with other users of the facility, so Hockey Victoria does not have exclusive access to them for the Event.

Changerooms are not to be utilised for team meetings, only for participants to get changed or utilise the amenities.





## MEDIA

Hockey Victoria will be providing regular updates on social media and an event summary in the week following the Championships.

Photographs may be taken and used in the promotion of the event. These photographs and the footage then may be used in the promotion of the Event.

If any participants do not wish to have their image used, they must contact Hockey Victoria a minimum of 5 business days prior to the Event to advise. The contact details for the relevant person at Hockey Victoria are provided below.

## MATCH & WARM UP BALLS

Hockey Victoria will be providing balls for teams to complete their warm ups with, so you will not be required to bring any balls with you to the event. Teams must pack up the warm up balls into the bag near the Technical Bench at the conclusion of the warm-up.

Hockey Victoria will also provide all match balls. **Home named teams will be responsible for collecting match balls and bringing them back to the tech bench.**

# VENUE ACCESS AND INFORMATION

MONASH UNIVERSITY Recreation Hall

**Address:** Monash University Clayton Campus, 42 Scenic Blvd, Clayton 3186

**Public Transport:** For a list of public transport routes, see the link [here](#).

**Parking:** Monash University has parking available. Please note that there are some spots of paid parking depending on the timing, which can be paid via App or paid at a parking meter. For more information, please see the link [here](#).

**Entry:** Team Staff and players are to enter the courts via the back entrance side doors, as seen in Figure 2. Please note once team staff and players enter these doors, they are to wait in the storage area until the matches have finished. Once the matches have finished, the teams can then enter the pitch area. A tournament director will advise of when you can enter.

**Food and Beverage:** A café can be accessed at the venue, for food and beverages, but it is requested that teams do not set up in there and occupy tables. There are also some other fast food restaurants and cafes located within the Monash Clayton campus.

**Spectators:** Spectators are not allowed within the Recreation Hall. There is a viewing deck overlooking the indoor court, located one level above the changerooms.



Figure 1: Map of Monash University

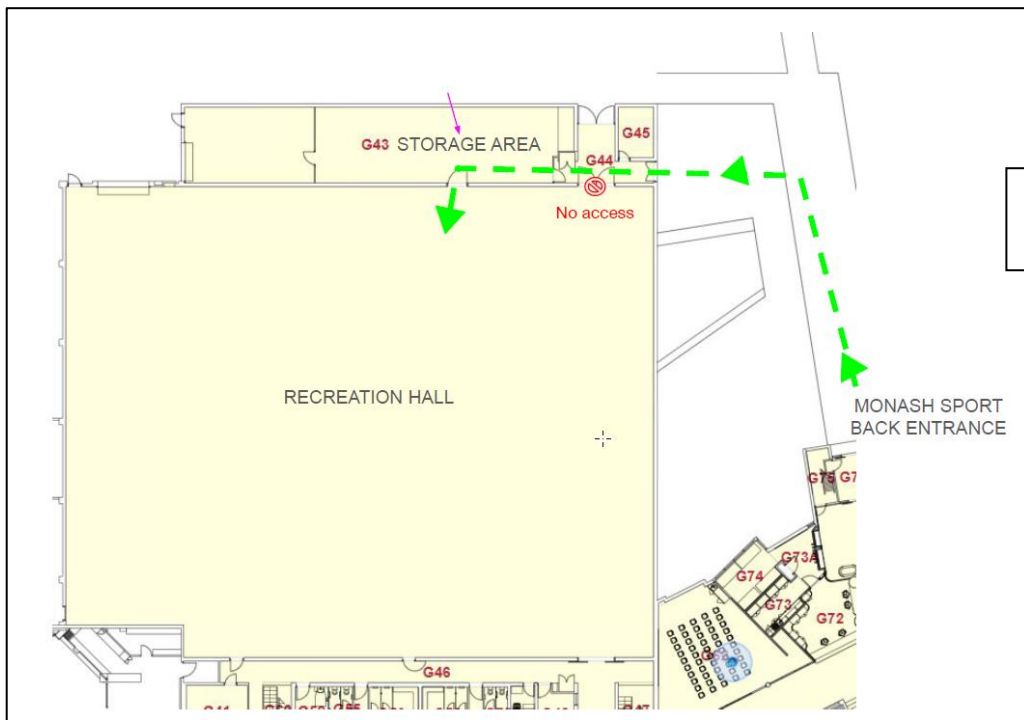
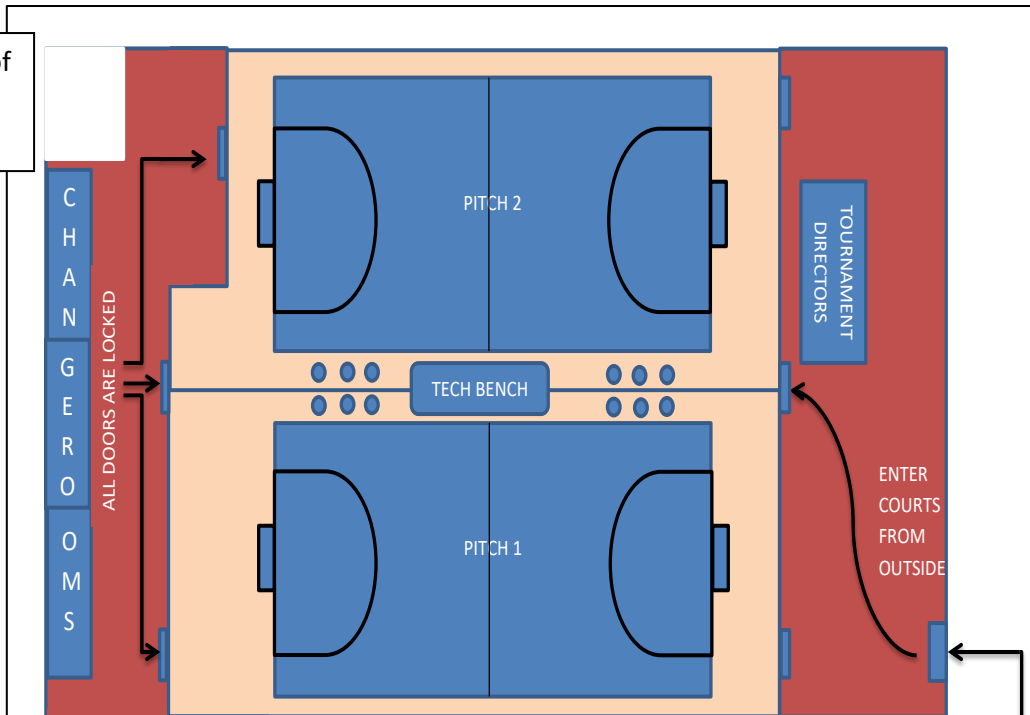


Figure 2: Entry to Courts



## CONTACT DETAILS

### HOCKEY VICTORIA CONTACT

Should you have any further queries in the lead up to the Event, please do not hesitate to contact Charlie Perry on the details provided below.

Email: [cperry@hockeyvictoria.org.au](mailto:cperry@hockeyvictoria.org.au) or 0412501883

### EVENT OFFICIAL'S CONTACT DETAILS

Position	Name	Email Address
Tournament Director	Karen Lawrence	<a href="mailto:Karen@dkojb.com">Karen@dkojb.com</a>
Assistant Tournament Director	Stuart McCleary	<a href="mailto:stuart.mccleary@msd.com">stuart.mccleary@msd.com</a>
Assistant Tournament Director	Taela Eggers	<a href="mailto:taela88@gmail.com">taela88@gmail.com</a>
Umpire Manager	Damien Deefholts	<a href="mailto:damiendeefholts@gmail.com">damiendeefholts@gmail.com</a>
Umpire Manager	Jeremy Harris	<a href="mailto:jlh@harrisfamily.net.au">jlh@harrisfamily.net.au</a>



# APPENDIX 1 – HV MEMBERSHIP INFORMATION

## Playing Registrations

All players that compete in the JIC will need to hold a current Hockey Victoria Playing Membership.

1. Visit - <https://www.hockeyvictoria.org.au/competitions-events/register-now/>
2. Select the relevant Club, then a tab will open up the Clubs Registration Page
3. Click Renew (if you were a 2023 Member) or Register (if you did NOT play in 2023)
4. Enter in last name, D.O.B & select the relevant playing membership type
5. Select Register
6. Answer the registration questions.
7. Register membership

## Dual Registrations – for those playing with a different club to their regular one

The individual will need to register with their primary club (the one that they intend to play for in the 2024 Winter Competition Season). Once done, complete the below:

1. Visit - <https://www.hockeyvictoria.org.au/competitions-events/register-now/>
2. Select the relevant Club, then a tab will open up the Clubs Registration Page
3. Click Renew (if you were a 2023 Member) or Register (if you did NOT play in 2023)
4. Enter in last name, D.O.B & select the relevant playing membership type
5. Select Register
6. Answer the registration questions.
7. Register membership

## Team Managers & Coaches

If you are a Team Manager and/or Coach at the JIC, you will need to hold one of the following three membership types:

- Hockey Victoria Non-Playing Membership – if you do not intend on playing or officiating in any of the 2024 Hockey Victoria Competitions or Events.
- Hockey Victoria Playing Membership – if you intend to play in any of the 2024 Hockey Victoria Competitions or Events.
- Hockey Victoria Officiating Membership – if you intend to officiate at any of the 2024 Hockey Victoria Competitions or Events.

Once you have determined the appropriate membership type, please follow these steps:

- Visit - <https://www.hockeyvictoria.org.au/competitions-events/register-now/>
- Select the relevant Club, then a tab will open up the Clubs Registration Page
- Click Renew (if you were a 2023 Member) or Register (if you did NOT play in 2023)
- Enter in last name, D.O.B & select the relevant playing membership type
- Select Register
- Answer the registration questions.
- Register membership



## **Officials**

If you are officiating at the JIC, you will need to purchase a current Hockey Victoria Officiating Membership.

Please complete the following steps:

- Visit - <https://www.hockeyvictoria.org.au/competitions-events/register-now/>
- Select the relevant Club, then a tab will open up the Clubs Registration Page
- Click Renew (if you were a 2023 Member) or Register (if you did NOT play in 2023)
- Enter in last name, D.O.B & select the relevant playing membership type
- Select Register
- Answer the registration questions.
- Register membership

Officials that do not affiliate with a local club need to register via - <https://www.hockeyvictoria.org.au/registration/>

Outdoor Playing Members who are also Officials will need to select the below registration fees when registering with their club via <https://www.hockeyvictoria.org.au/competitions-events/register-now/>

- HV Adult Playing & Officials Registration (Aged over 19+) OR
- HV Youth Playing & Officials Registration (Aged 11 – 18)