



Seventh Annual

2022 HUMPYBONG WINTERBASH

SAILING INSTRUCTIONS

Saturday 30th July 2022 – Sunday 31st July 2022

HYC Proudly Sponsored by:





Humpybong WinterBash 2022

Sailing Instructions

DIVISIONS 1 -5

1 RULES

- 1.1. The regatta will be governed by the rules as defined in The Racing Rules of Sailing (RRS).
- 1.2. The Prescriptions and Safety Regulations, Part 2 of Yachting Australia will apply.
- 1.3. The rules and regulations of Maritime Safety Queensland will apply
- 1.4. Racing rules 35, 44.1, 60.1(a), 66, 62.2, A4 and A5 will be changed as per these Sailing Instructions
- 1.5. The rules of the respective class associations will apply.

2 NOTICES TO COMPETITORS

- 2.1 Notices to competitors will be given on the day at the pre-race briefing and via flags flown on the committee boat (start only).
- 2.2 Notices to competitors may also be given during the event particularly on matters relating to safety and shipping movements. These notices will be via VHF77.

3 CHANGES TO SAILING INSTRUCTIONS

- 3.1 Any changes to the sailing instructions will be advised in the pre-start briefing held before the start of each day's racing:
 - 3.1.1 30th July– 10:00am
 - 3.1.2 31st July– 9:00am



4 SIGNALS MADE ASHORE

- 4.1 Signals made ashore will be displayed on the flagpole located at Humpybong Yacht Club.
- 4.2 When flag “AP” is displayed ashore ‘1 minute’ is replaced with ‘not less than 30 minutes’ in Race Signals AP.

5 SCHEDULE

5.1. Race 1-3 – 30th July 2022 – Three Can Bash

- 5.1.1. Pre-start briefing: 10:00am
- 5.1.2. Warning signal for the first Division: not before 11:55am

5.2. Race 4 – 31st July 2022 – WinterBash Marathon

- 5.2.1. Pre-start briefing: 09:00am
- 5.2.2. Warning signal for the first Division: not before 10:30am.

5.3. Change of Schedule

- 5.3.1. The Organising Authority may make a decision as late as 5pm 29th July based on the weather forecast, to swap the event days so that the Marathon is run on 30th July and the Three Can Bash on 31st August.
- 5.3.2. If the dates are swapped, the pre-start briefings for both days be held at 10am and the warning signal for the first Division shall not be made before 11:00am on both days

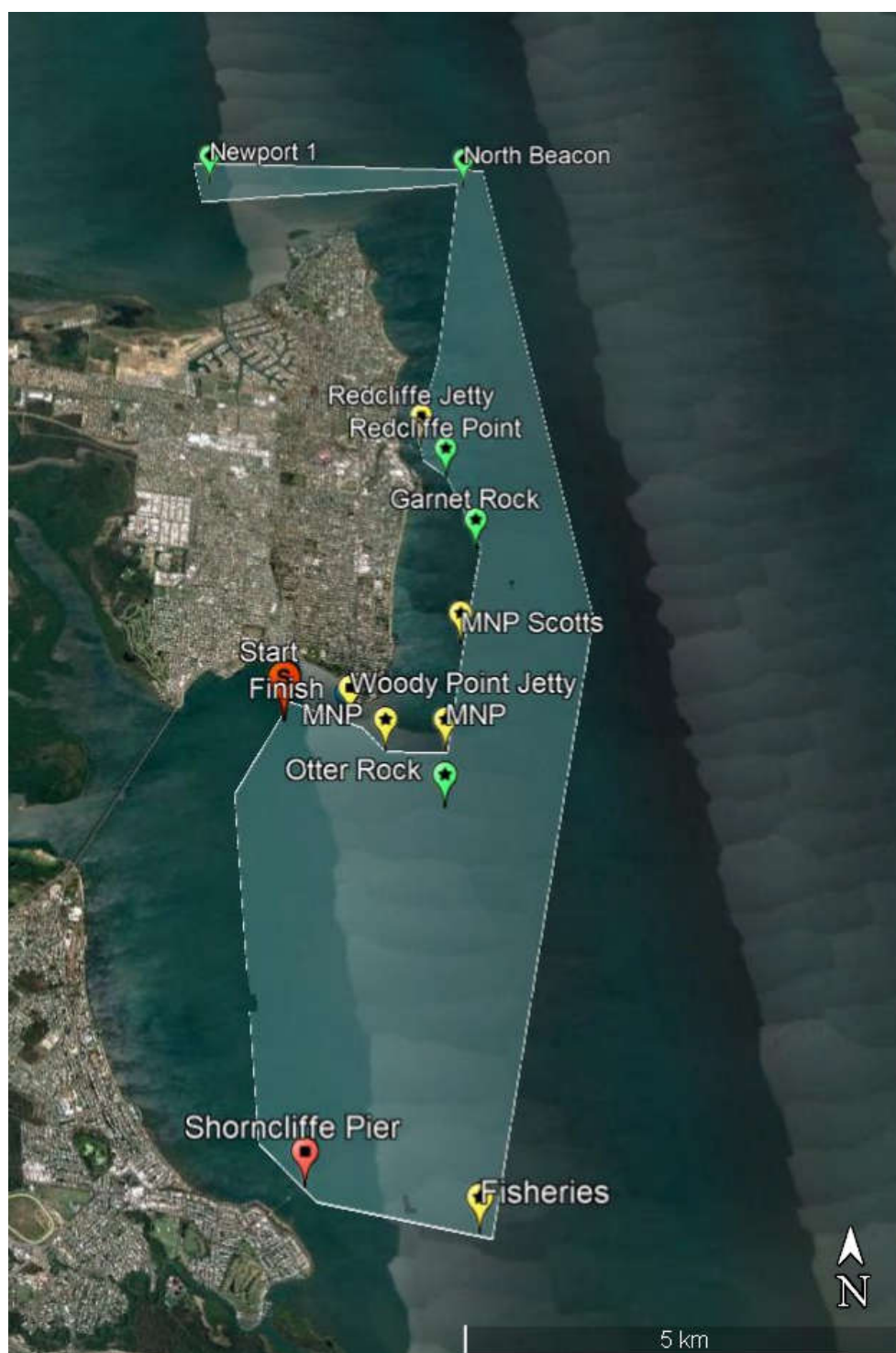
6 CLASS FLAGS

The “class” flag for Division 1 will be numeral pennant “1”
The “class” flag for Division 2 will be numeral pennant “2”
The “class” flag for Division 3 will be numeral pennant “3”
The “class” flag for Division 4 will be numeral pennant “4”
The “class” flag for Division 5 will be numeral pennant “5”



7 RACE AREA

The race area is Moreton Bay area taking in Bramble Bay and Deception Bay and the Redcliffe Peninsula foreshore from Shorncliffe Pier and the fisheries marker off Cabbage Tree Creek in the south to North Rocks beacon in the North and across Deception Bay to the Newport harbour entry beacons. Refer the course area and course maps attached in Appendix Two.





8 THE COURSES

- 8.1 The course diagrams in Appendix Two indicate the race area and legs of the course for the Marathon racing. The marks to be used are detailed in Section 10.
- 8.2 Specific requirements associated with the course are detailed in Section 18. - SAFETY REGULATIONS and in Appendix One.
- 8.3 The course may be shortened or revised in the event of light weather or potential untenable conditions (refer Section 13. CHANGES TO THE COURSE). The final course will be detailed for each class at the pre-start briefing.

9 AREAS THAT ARE OBSTRUCTIONS

- 9.1 The following areas are designated as obstructions:
 - 9.1.1 The reef area to the east of Woody Point Jetty delineated by the yellow Marine National Park yellow markers, northwards to MNP12 at Scotts Point,
 - 9.1.2 The area enclosed by a line from the shoreline to MNP12 Scotts Point, north to Garnet Rock marker, NNW to the Redcliffe Point marker, north to Redcliffe Jetty, NNE to North beacon and SW to the entrance to Scarborough Leads 3 and S to the shore
- 9.2 The Junior Fleet course set to the west of the boat ramp is defined as an obstruction and all Division 1 – 5 boats are to stay clear.
 - 9.2.1 Division 1 – 5 boats entering the course will be recorded as DSQ.

10 MARKS OF THE COURSE

The marks of the course, the rounding order and direction of rounding or passing each shall be:

- 10.1 Races 1- 3 – Three Can Bash
 - 10.1.1 Start – yellow pin buoy – (Starting boat to starboard);
 - 10.1.2 Rounding marks 1, 2 and 3 – orange inflatable buoy to port
 - 10.1.3 Finish – yellow and black inflatable buoy – (boat to port)



10.2 Race 4 – Marathon marks of the Course

- 10.2.1 Start – yellow pin buoy – Orange flag on start boat.
- 10.2.2 Woody Point - orange inflatable buoy – 150m south of Woody Point jetty.
- 10.2.3 Otter Rock - gate consisting of green fixed mark and pink tear shaped buoy to SE (approx. 27°16'35.27"S, 153° 6'46.91"E).
- 10.2.4 Shorncliffe Pier – yellow and black inflatable buoy (approx. 27°19'12.81"S, 153° 5'18.72"E) approximately 150m off the end of the pier
- 10.2.5 Fisheries Beacon - pole beacon with light (approx. 27°19'30.00"S, 27°19'30.00"S) WNW of entrance to Cabbage Tree Creek.
- 10.2.6 Scott's Point - MNP12 NE - gate consisting of fixed yellow buoy and yellow inflatable buoy to E (approx. 27° 15.3' S 153° 7.1' E).
- 10.2.7 Garnet Rock – green buoy – (approx. 27°14'30.30"S, 153° 7'24.48"E) – **all boats to pass east of the mark**
- 10.2.8 Redcliffe Point – green buoy - (approx. 27°13'52.19"S, 153° 7'16.96"E) – **all boats to pass east of the mark**
- 10.2.9 Redcliffe Pier – orange inflatable buoy 150m east of the jetty – (approx. 27°13'33.99"S 153° 7'12.11"E)
- 10.2.10 North Beacon – gate consisting of North Reef Beacon and an orange inflatable buoy to the east (approx. 27°11'0.85"S, 153° 7'57.89"E)
- 10.2.11 Newport 1 –outer green lateral marking the Newport Waterways entrance (approx. 27°10'58.92"S, 153° 5'37.62"E).

10.3 Race 4 – Marathon – passing through gate and rounding of marks

The course to be sailed by each Division will be advised at the Race Briefing on the morning of Race 4 (Sect 8.3). The course marks and the order they are to be passed through or rounded are set out in Appendix A. The direction of rounding or passing through the mark according to its order on the course is detailed below:

- 10.3.1 Mark A – Woody Point jetty – Jetty to port, orange inflatable to starboard.
- 10.3.2 Mark B – Otter Rock – enter the gate from the north, green buoy to starboard, pink teardrop to port.
- 10.3.3 Mark C – Shorncliffe pier – round mark to port.
- 10.3.4 Mark D – Fisheries – round mark to port.



- 10.3.5 Mark E – Otter Rock, enter gate from south, green buoy to port, pink teardrop to starboard
- 10.3.6 Mark F – Scott’s Point – enter the gate from the south, yellow MNP buoy to port, yellow inflatable to starboard. Boats not progressing to Redcliffe are to round the yellow buoy to starboard
- 10.3.7 Mark G – Garnet Rock – remain to east of mark
- 10.3.8 Mark H – Redcliffe Point – remain to east of mark
- 10.3.9 Mark I Redcliffe Pier – round the orange buoy to starboard on the way north. Boat not progressing to North Beacon are to round the orange inflatable to starboard.
- 10.3.10 Mark J – North Beacon – enter the gate from the south, beacon to port and orange inflatable to starboard. Boats not progressing to Newport Leads are to round the orange inflatable to starboard.
- 10.3.11 Mark K – Newport 1 Starboard Lead – round the mark to starboard.
- 10.3.12 Mark L- North Beacon - enter the gate from the north, Beacon to starboard and orange inflatable to port.
- 10.3.13 Mark M – Redcliffe Point – remain to east of mark
- 10.3.14 Mark N– Garnet Rock – remain east of mark.
- 10.3.15 Mark O– Scott’s Point - enter the gate from the north, MNP buoy to starboard and yellow inflatable to port.
- 10.3.16 Mark P – Otter Rock - enter the gate from the north, green beacon to starboard and pink teardrop to port.



11 THE START

- 11.1 The start line will be to the south of Pelican Park in Bramble Bay.
- 11.2 A yellow pin buoy will mark the port end of the line and a staff displaying an orange flag on the HYC Committee Boat at the starboard end of the line. The event start will be governed by RRS 26.
- 11.3 An "anti-barging" buoy may be permanently streamed from the Race Committee boat for the start sequence of all or any races. The buoy is taken to be a permanent part of the committee boat and any competitor boat touching the buoy, or passing between it and the Race Committee boat, is taken to have touched the Committee boat.
- 11.4 A boat starting later than 10 minutes after her starting signal will be scored Did Not Start without a hearing. This changes Rules A5 and 63.1.

12 THE FINISH

- 12.1 Day One – Three Can Bash
 - 12.1.1 The finish line shall be a line between the staff flying the blue pennant on the Finish Boat and a yellow and black inflatable buoy.
- 12.2 Day Two – WinterBash Marathon
 - 12.2.1 The finish mark will be an imaginary line extending between the staff flying the blue pennant on the Committee Boat located approximately 300m SSW of the Woody Point and a yellow pin buoy to the north of the boat.
 - 12.2.2 Yacht finish times will be taken by the race committee from the Committee Boat.

13 CHANGES TO THE COURSE

- 13.1 Three Can Bash Day – 30th July. The course for the Three Can Bash races will not be changed once set and the first race sequence started.
- 13.2 WinterBash Marathon – 31st July.
 - 13.2.1 In the event of extra light weather forecast for 31st July, the courses for all divisions may be shortened by the removal of one or more rounding points. The likely revisions will be one of the shorter courses detailed in Appendix Two to this Sailing Instruction.
 - 13.2.2 Notification of changes to the course will be made at the pre- race briefing on 31st July.



14 PENALTY SYSTEM

- 14.1 One or two turns penalties or retirement/disqualification to RRS 44. Scoring or time penalties will not apply.

15 TIME LIMIT

- 15.1 Races 1-3 30 minutes after the first boat of that division across the line
15.2 Race 4 17:00 hrs on Sunday 31st July 2022

16 PROTESTS AND REQUESTS FOR REDRESS

- 16.1 Protest forms are available at the Humpybong Yacht Club race office. Protests and requests for redress or reopening must be delivered to the Principal Race Officer or his delegate within the appropriate time limit.
- 16.2 The protest time limit is 1 hour after the last boat has finished the last race of the day. If the last race of the day has been abandoned or postponed the time limit will be 1 hour from the signaling of the abandonment or postponement.
- 16.3 Notices will be posted no later than 30 minutes after the protest time limit to inform competitors of hearings in which they are parties or named as witnesses. Hearings will be held in the Protest Room located at the Humpybong Yacht Club.
- 16.4 Notices of protests by the Race Committee will be posted to inform boats under Rule 61.1(b).
- 16.5 On 31st July a request for reopening a hearing must be delivered within the protest time limit if the requesting party was informed of the decision on the previous day; or no later than 30 minutes after the requesting party was informed of the decision on the last scheduled day. This changes Rule 66.
- 16.6 On the 31st July a request for redress based on a protest committee decision must be delivered no later than 30 minutes after the decision was posted. This changes Rule 62.2.
- 16.7 A competitor may not protest on a question of measurement or equipment control later than the normal protest time except on the grounds that there has been a subsequent alteration to the boat or its equipment.



17 HANDICAP DIVISIONS

- 17.1 It is intended that races will be sailed and scored in five divisions:
- 17.1.1 Division 1 - Multi hulls VYC<73
 - 17.1.2 Division 2 - All other catamarans ≥ 79 and < 107 and windsurfers
 - 17.1.3 Division 3 - scratched
 - 17.1.4 Division 4 - Off the beach monohulls VYC < 110 and catamarans ≥ 107
 - 17.1.5 Division 5 - Off the beach monohulls VYC > 110
- 17.2 *Dependent upon entries received, the off the beach divisions may further be divided into high performance and normal divisions for the marathon to enable longer courses to be sailed by the high performance boats.*
- 17.3 The handicap system for Division 3 will be Performance Handicap (PH) based on entry details, boat design and available historical information.
- 17.4 The handicap system for Divisions 4 and 5 will be based on the most recently published VYC rating unless a VYC for a boat is not available in which case the Race Committee shall determine an appropriate yardstick.
- 17.5 If the number of entries in any division is less than 3, that Division will be abandoned any entrants will start with another Division advised by the Committee at the on-shore briefing before the start of the day's racing.

18 SAFETY REGULATIONS

- 18.1 Obstructions and Shallow Banks
- 18.1.1 The Redcliffe Peninsula foreshore has occasional rocky outcrops. The extent of those outcrops is marked by green lateral beacons and buoys. Participants are advised to keep to the east of direct lines between those navigation marks.
 - 18.1.2 Participants without local knowledge or with a draft exceeding 1.5m are advised not to sail on or south of the rhumb line between the North Reef green beacon and the Scarborough Harbour outer entrance beacons. Rock protrusions exist in that area.
 - 18.1.3 Participants without local knowledge or with a draft exceeding 1.0m are advised not to sail in the area defined by yellow boys as MNP offshore of Scotts Point around to Woody Point. Rock protrusions exist in that area.
- 18.2 All commercial ships shall be avoided. All yachts must give way and keep well clear.



- 18.3 Sign-in and Sign-out. All competitors intending to start shall complete a Race Entry Sheet provided in the 'Sign-on' area at the club before the warning signal for each race. All competitors shall 'Sign-off' on the Race Entry Sheet within 60 minutes of the last boat racing finishing for the day. Failure to sign on or off may result in protest by the Race Committee.
- 18.4 Retirement: A boat that retires from a race shall notify the race committee as soon as possible.
- 18.5 Attention is drawn to Appendix A to these sailing instructions outlining those prescriptions of the aquatic event authority (issued by Maritime Safety Queensland) which apply to participating yachts. Those prescriptions do not form part of these sailing instructions. They are overriding statutory requirements.
- 18.6 The race committee reserves the right to inspect any competing yacht for compliance with the Notice of Race with regard to eligibility and safety prescriptions. Any non-compliance not resulting from an incident reported during the event may result in disqualification (at the discretion of the race committee).

19 REPLACEMENT OF CREW OR EQUIPMENT:

- 19.1 Not applicable to this regatta

20 EQUIPMENT AND MEASUREMENT CHECKS

- 20.1 A boat or equipment may be inspected at any time for compliance with the class rules and sailing instructions. On the water, a boat can be instructed by a race committee measurer to proceed immediately to a designated area for inspection.

21 OFFICIAL BOATS

- 21.1 Official boats may be identified by Humpybong Yacht Club burgees flown.

22 SUPPORT BOATS

- 22.1 Team leaders, coaches and other support personnel shall stay outside areas where boats are racing from the time of the preparatory signal for the first class to start until all boats have finished or the race committee signals a postponement, general recall or abandonment.



23 RADIO COMMUNICATIONS

- 23.1 A boat shall neither make radio transmissions while racing nor receive radio communications not available to all boats. This restriction also applies to mobile telephones.
- 23.2 GPS tracking devices are allowed to be carried by competitors provided they are mounted or stored in such a way as to prevent any readout or screen from being viewed by the competitor while racing. Mobile devices such as mobile phones may be used as a GPS tracking device provided it is not used for making or receiving other radio transmissions while racing.

24 PLACING AND PRIZES

- 24.1 Placings will be announced and prizes presented at the HYC clubhouse no later than 6:30pm on Sunday 31st July 2018.
- 24.2 Prizes will only be presented to bone fide representatives of competing boats who are in attendance at the presentation. Non-attendance will not affect placings.
- 24.3 Awards will be presented as follows:
 - 24.3.1 Three Can Bash - One award for the winner of each division
 - 24.3.2 WinterBash Marathon - One award for the winner of each division.
 - 24.3.3 Awards will be made separately for Division 6 winners for all races



25 DISCLAIMER OF LIABILITY

25.1 Competitors participate in the regatta entirely at their own risk. See Rule 4, Decision to Race. The organizing authority will not accept any liability for material damage or personal injury or death sustained in conjunction with or prior to, during, or after the regatta.

25.2 The yacht's decision to participate will be deemed to be testament that:-

25.2.1 the yacht complies with the event entry eligibility requirements within the Notice of Race and these Sailing Instructions;

25.2.2 the skipper and crew fully understand the meaning and intent of the RRS PART 1 – FUNDAMENTAL RULES;

25.2.3 the skipper and crew have the necessary knowledge and skills to safely participate in and complete the event;

25.2.4 the participant indemnifies the Organising Authority, its agents and volunteers from any responsibility for any matter relating to the yacht's participation in the event.

26 INSURANCE

Each participating yacht must be insured with a valid third party and public liability policy to a minimum cover of \$5,000,000. Proof of insurance is a prerequisite to participation.

.



Appendix One

STATUTORY REQUIREMENTS

The following are specific prescriptions for participants mandated by the Aquatic Event Authority issued by Maritime Safety Queensland and the MBBC emergency plan for this event. These prescriptions apply to participating vessels and their owners (or owner's representative) and skippers.

Having been formally issued by Maritime Safety Queensland under the auspices of the Transport Operations (Marine Safety) Act 1994 and the associated regulation, these prescriptions are mandatory and override the sailing instructions. Any incident, being a breach of these prescriptions and resulting in action being taken by Queensland Water Police, Boating and Fisheries patrols, Maritime Safety or Port Control, may be deemed by the race committee to be grounds for disqualification (refer SI 16.3).

- Radio communication with the race committee and the designated shore station on VHF 77 must be maintained at all times during the event.
- All participating ships and operators of such ships must comply with the *Transport Operations (Marine Safety) Act 1994* and the subordinate Regulation including the Marine Safety (Domestic Commercial Vessel) National Law Act 2012 and subordinate Regulation.
- Participating vessels must stay well clear of commercial traffic and not impede their passage. Skippers and navigators must listen to and respond to 'VHF channel 12' in or near the shipping channels in the Brisbane Pilotage area.
- The *International Regulations for Preventing Collisions at Sea 1972* (COLREGS) apply to all yachts.
- The Racing Rules of Sailing (RRS) will apply only between those yachts that are participating in the event, for the duration of the event. Should interaction occur with non-participating ships, the COLREGS shall apply. In particular, attention is drawn to
"Rule 9 - 'Narrow Channels':- *a sailing vessel shall not impede the passage of a vessel which can safely navigate only within a narrow channel or fairway*".
[Please note: - Avoidance of shipping must be pre-planned and take cognizance of the limited maneuverability of ships and 'cross channel' tidal influences.]
- Participating vessels must display registration labels and identification numbers.
- Participants are required to have a bone fide representative attend the pre-race briefing reinforcing the prescriptions within the Aquatic Event Authority.





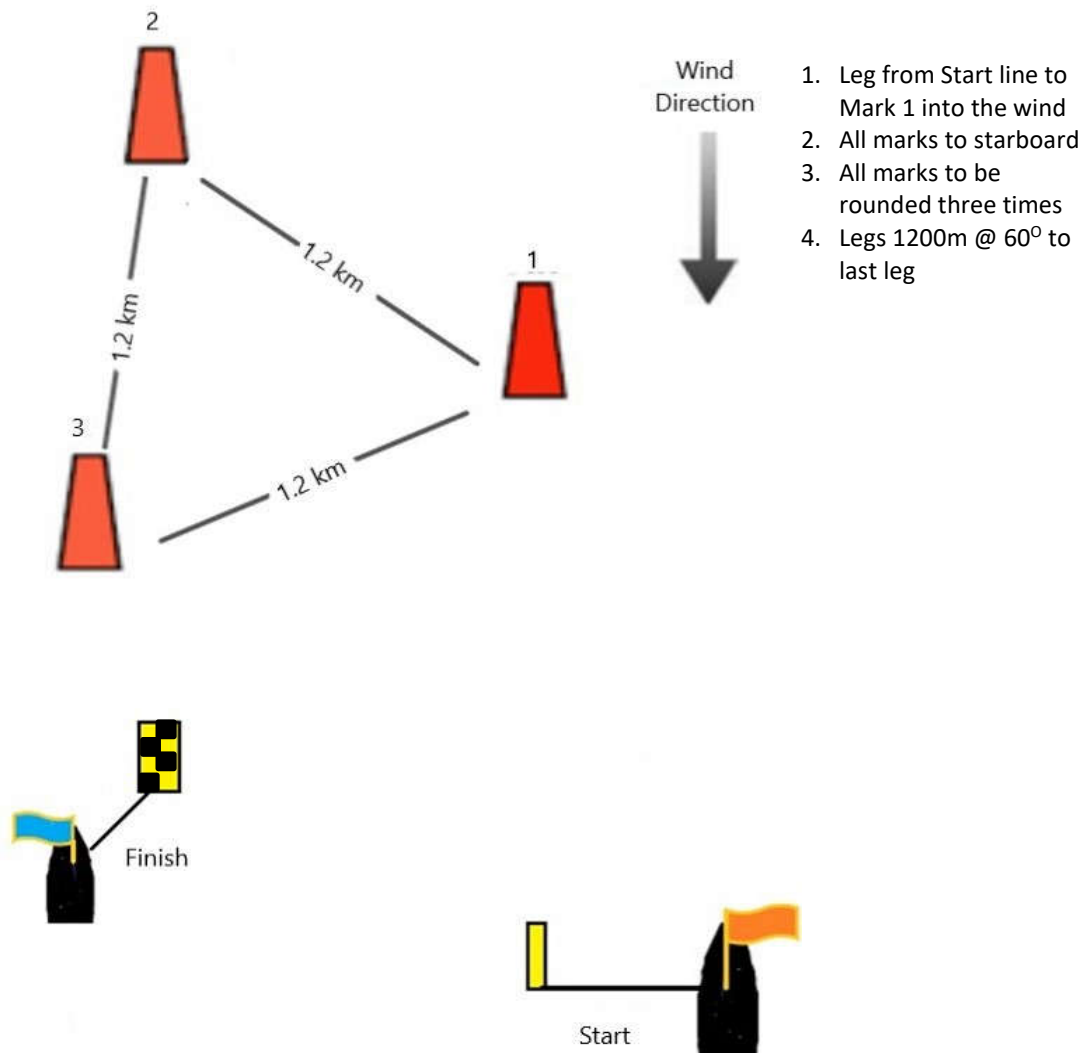
Appendix Two

RACING AREAS AND COURSES

The course diagrams within these Sailing Instruction are not to be used for navigational purposes. Navigation must be via officially recognized charts (e.g. MSQ chart MB1 MORETON BAY Manly to Mooloolaba).

The specific course to be sail may be modified at the daily pre-race briefing. Those instructions issued at the daily pre-start briefing takes precedence over the diagrams

THREE CAN BASH COURSE DIAGRAM



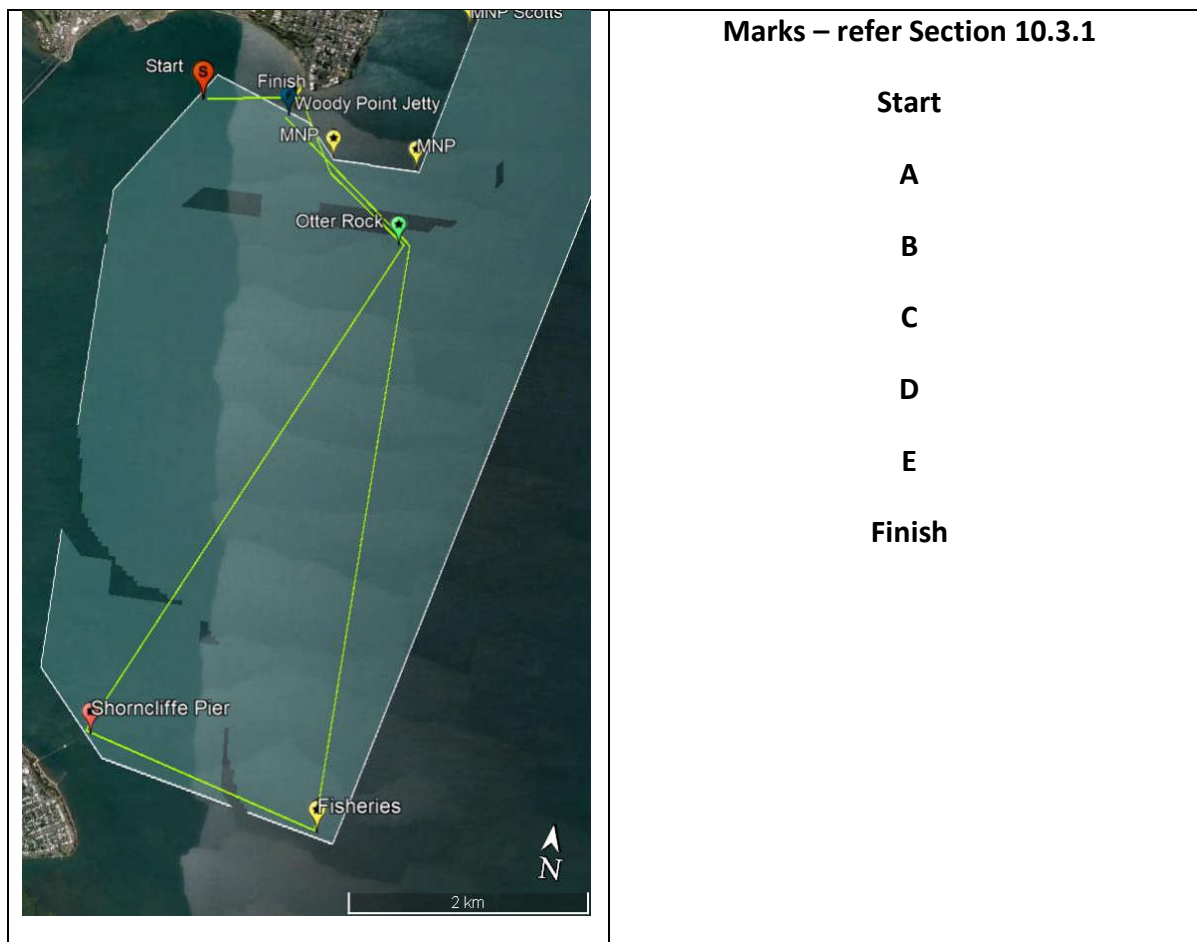






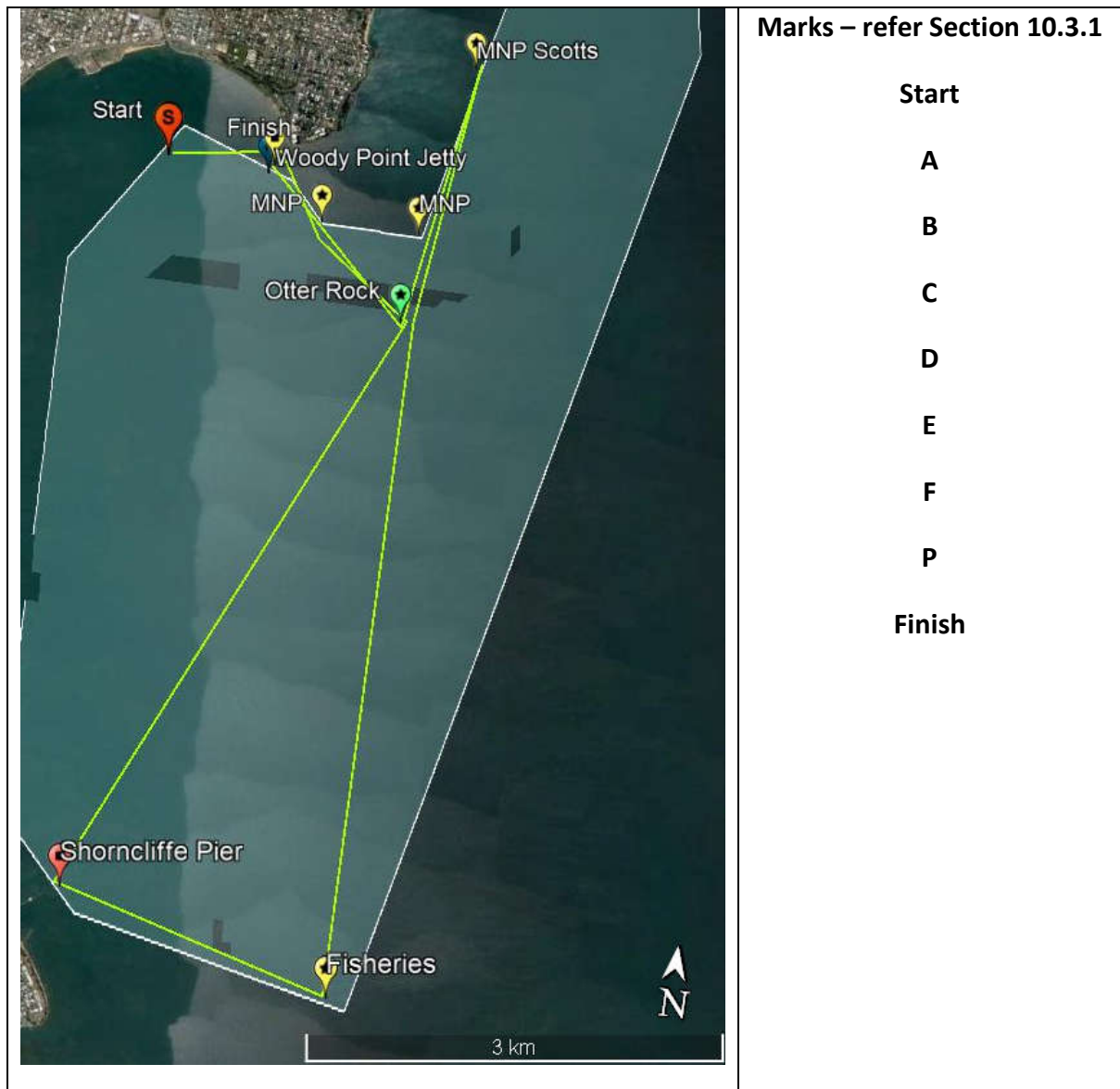
WINTERBASH MARATHON COURSE DIAGRAM

COURSE A (9.29NM)

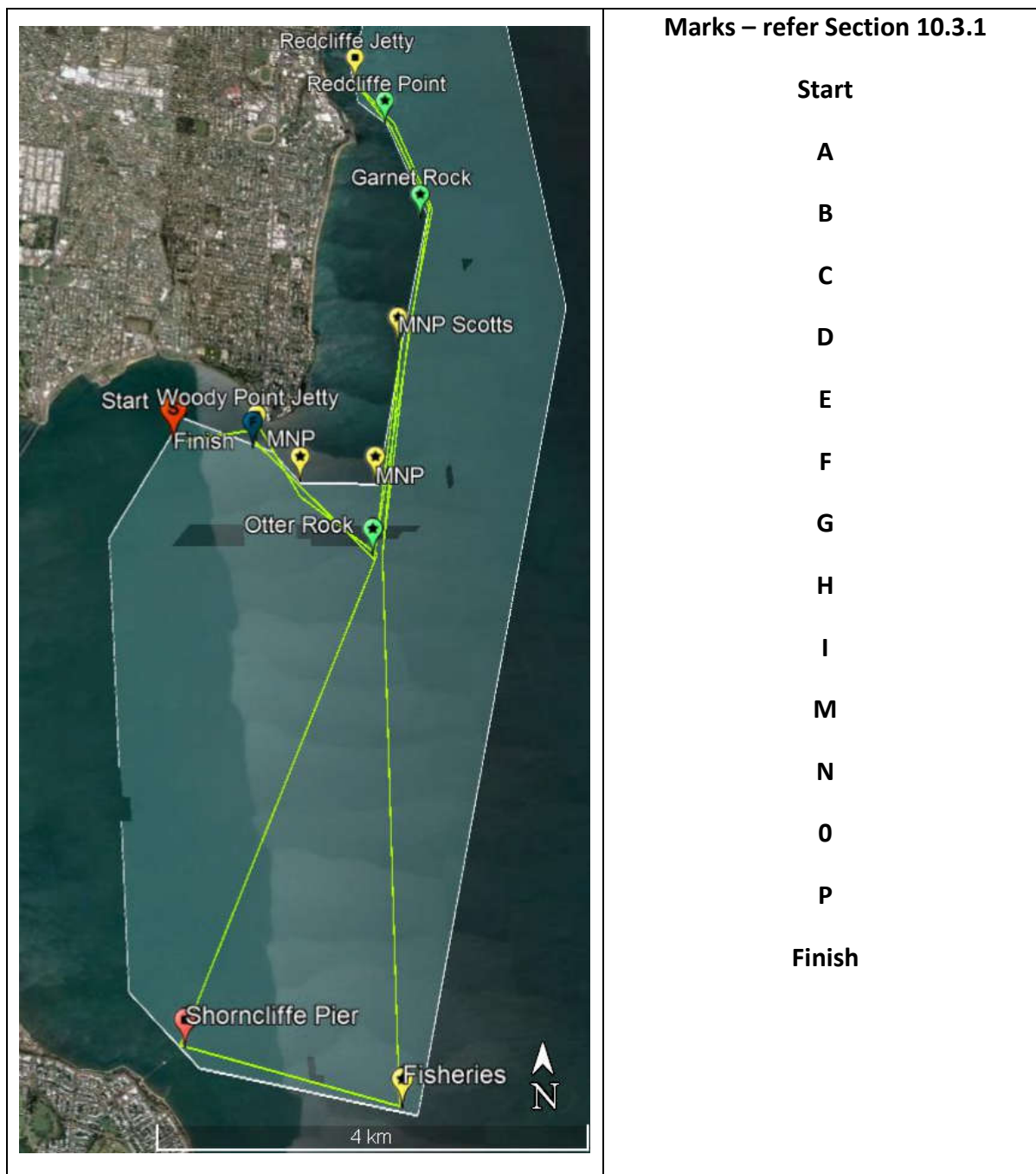




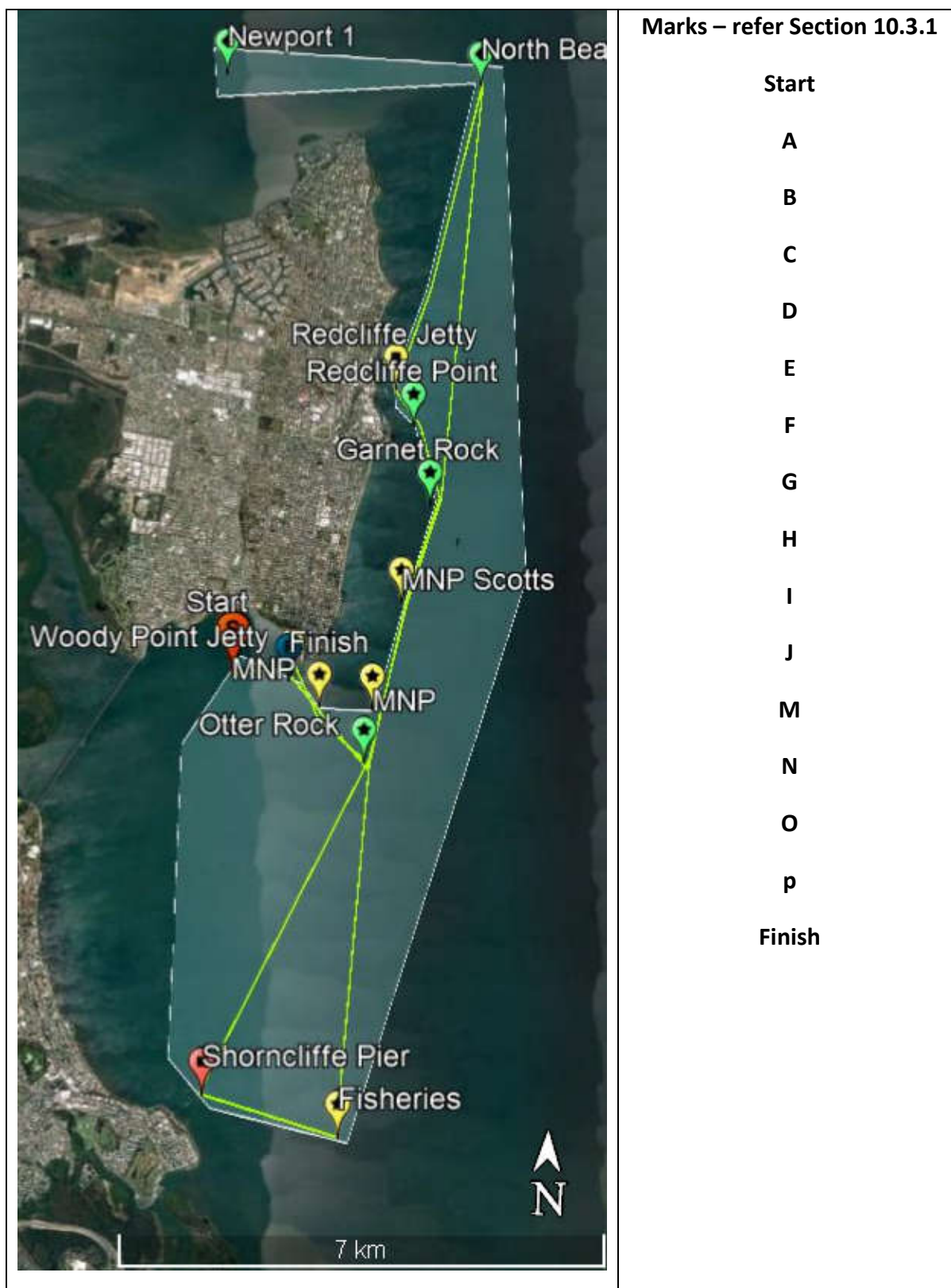
Course B (12.04NM)



Course C (13.8NM)



COURSE D (20.9NM)



COURSE E (25.16NM)

