



---

# 2018 JUNIOR SPRING SERIES

## REVISION #1 & #2 – SEE HIGHLIGHTS AND RED MARKINGS

**RACING:** SATURDAY 3 NOVEMBER –  
SATURDAY 24 NOVEMBER 2018

**TRAINING:** FRIDAY 21 SEPTEMBER –  
SATURDAY 24 NOVEMBER 2018

**CLASS DIVISIONS**  
GREEN FLEET OPTIMIST  
INTERMEDIATE OPTIMIST  
OPEN OPTIMIST

# NOTICE OF RACE

# SAILING INSTRUCTIONS

ORGANISING AUTHORITY  
THE ROYAL QUEENSLAND YACHT SQUADRON

---

## INTRODUCTION

The Spring Series is a mix of training and racing for Optimists in Green, Intermediate and Open levels. Optimists have their own programs run with their own coaches. The racing that starts on Saturdays as of **3 November 2018** is for the purpose of coaches being able to work on strategy and racing skills on the course with their sailors. Racing is a major component of the RQYS Junior Classes Training Programs, contributing significantly to the skills-development of sailors and allowing them to improve their independence overall on the water.

Please note Open Optimists are to enter 134<sup>th</sup> Sailing Season which is the afternoon racing on Saturdays to be able to train/race.

## 1 RULES

- 1.1. The series will be governed by the rules as defined in The Racing Rules of Sailing.
- 1.2. The AS Special Regulations Part 2 – Off the Beach Classes and AS Prescriptions will apply.
- 1.3. The World Sailing Introductory Rules of Sailing will apply to Green Fleet, as shown in Attachment 3.
- 1.4. All class rules shall apply.
- 1.5. Coaching is allowed during racing, at the discretion of the RQYS nominated coaches.

## 2 ELIGIBILITY AND ENTRY

- 2.1. The series is open to all **current RQYS Junior Members** in the Optimist ~~and Junior Board~~ classes.
- 2.2. All competitors shall comply with rule 46 and 55.



- 2.2.1. RRS 46 – PERSON IN CHARGE: A boat shall have on board a person in charge designated by the member of organization that entered the boat. See rule 75.
- 2.2.2. RRS 55 – TRASH DISPOSAL: A competitor shall not intentionally put trash in the water. This rule applies at all times while afloat. The penalty for a breach of this rule may be less than disqualification.
- 2.3. [Entry for all classes shall be lodged here.](#)
- 2.4. Competitors will not be eligible to compete or to be included in the results until full payment of the series entry fee is made.

### 3 FEES

The series entry fees are:

DESCRIPTION	FEE
Optimists Series Entry (all levels)	\$170.00 for the series (racing + training)
<del>Boards Series Entry</del>	<del>\$170.00 for the series (racing + training)</del>
Friday Afternoon Training (open optimists only)	\$100.00/month charged to account
All classes casual entry	\$30.00 per race day
Optimist Charter Charter must be booked and paid for online. Limited available.	\$150.00 for the series (racing + training)
<del>Bic Techno 293 Charter</del> <del>Charter must be booked and paid for online. Limited available.</del>	<del>\$150.00 for the series (racing + training)</del>

### 4 VENUE

Royal Queensland Yacht Squadron (RQYS) as per Attachment 1.

### 5 DIVISIONS

- 5.1. The divisions in this series are:
- Green Fleet Optimist
  - Green Fleet Poly Optimist
  - Intermediate Fleet Optimist
  - Open Fleet Optimist
  - ~~Techno 293~~
  - ~~Techno 3.5/4.5~~
  - ~~Other boards~~
- 5.2. Three (3) competitors will constitute a division.

### 6 TERM SCHEDULE

- 6.1. The racing schedule is as per the table below.
- 6.2. Please note there will be a briefing on every Saturday morning Race Day at 0830 hrs and the First Warning Signal shall be at 0900 hrs.

FLEET	EVENT	DATES	TIME
Green Fleet Intermediate Fleet	No Training	13 October 2018 28 October 2018	
Everyone	No Training	22 September through to 7 October 2018	
Green Fleet	Training from 21 September (Not on between 22 September and 7 October)	Fridays	1600 – 1800 hrs
	Racing from 3 November 2018 – 24 November 2018	Saturdays	0830 – 1130 hrs



<b>Intermediate</b>	Training from 21 September (Not on between 22 September and 7 October)	<b>Fridays</b>	1600 – 1800 hrs
	Racing from 3 November 2018 – 24 November 2018  Intermediate Fleet Sailors are encouraged to race on Saturday afternoons (included with their Junior Series Entry)	<b>Saturdays</b>	0830 – 1130 hrs  First warning 1330 hrs
<b>Open Fleet</b>	Training from 18 September (Not on between 22 September and 7 October)	<b>Tuesdays Thursdays</b>	1600 – 1800 hrs
	Racing from 3 November 2018 – 24 November 2018  Afternoon Club Racing *Must have a Seasons Entry	<b>Saturdays</b>	0830 – 1130 hrs  First warning 1330 hrs

- 6.3. A maximum of **eight (8) races** are scheduled for this series.
- 6.4. No more than two (2) races shall be raced on each race day.
- 6.5. The first warning signal for each race day shall be at 0900 hrs.
- 6.6. No warning signal shall be made after **1100 hrs**.

## 7 SAFETY REGULATIONS

- 7.1. All skippers shall sign-on before leaving shore and sign-off at the earliest possible time upon returning to shore, within the protest time limit.
  - 7.1.1. Sign-on and sign-off for racing for **all** sailors is downstairs at the new Marine Sports Amenities Building near the stairs.
- 7.2. Skippers that retire or do not intend to continue racing are required to sign-off immediately upon returning to shore.
- 7.3. A boat that retires from a race shall notify the race committee as soon as possible.
- 7.4. Sailors shall not leave the course area without the explicit permission and acknowledgment of their supervising instructor/coach.
- 7.5. Failure to sign-on shall result in that boat being penalised two (2) points for the first race of the session (but not worse than DNF).
- 7.6. Failure to sign-off shall result in that boat being penalised two (2) points for the last race of the session (but not worse than DNF).
- 7.7. Penalties will be applied without a hearing. This changes RRS 63.1 and A5.
- 7.8. Competitors shall comply with the Manly Harbour bylaws.

## 8 PROTEST TIME LIMIT

- 8.1. The protest time limit is 60 minutes after the last boat finishes or the time limit is exceeded, for each class.
- 8.2. Scoring enquiries and requests for redress will be taken up until 30 minutes after the last boat finishes the last race on the last race day of the series.

## 9 CHANGES TO THE SAILING INSTRUCTIONS

- 9.1. Any changes to the Sailing Instructions made before 1600 hrs of the day prior, shall be emailed to all entered competitors as well as posted on the official notice board as an amendment or a notice, on the day of.
- 9.2. Any changes to the Sailing Instructions made after 1600 hrs of the day prior, shall be posted on the [online notice board](#).

## 10 TARGET TIMES

- 10.1. Boats that fail to finish within the Time Limit or the Finish Window shall be scored Did Not Finish without a hearing. This changes RRS 35, A4 and A5.



10.2. Target times, time limits and finish windows are specified:

CLASS/FLEET	TARGET TIME	TIME LIMIT	FINISH WINDOW
Green Fleet Optimist	20 minutes	45 minutes	20 minutes
Intermediate Optimist	35 minutes	45 minutes	15 minutes
Open Optimist	40 minutes	50 minutes	15 minutes

## 11 CLASS FLAGS

- 11.1. The Green Fleet class flag is Green with a White Optimist Insignia (displayed below).
- 11.2. The Intermediate Fleet class flag is Blue with a White Optimist Insignia (displayed below).
- 11.3. The Open Fleet class flag is White with a Black Optimist Insignia (displayed below).
- ~~11.4. The Techno 293 and Bic Techno 293 Plus class flag is White with Red Insignia.~~

## 12 THE START

- 12.1. The starting line will be between a staff displaying an orange flag on the start/finish vessel and an orange teardrop mark to the port side of the start/finish vessel.
- 12.2. To alert boats that a race or sequence of races will begin soon, the orange starting line flag will be displayed with one sound at least five (5) minutes before a warning signal is made.
- 12.3. Four (4) minutes before the start, the Preparatory flag shall be raised.
- 12.4. One (1) minute before the start, the Preparatory flag shall be lowered.
- 12.5. Zero (0) minutes before the start, the class/warning signal flag shall be lowered.

## 13 THE FINISH

The finish line shall be between the start/finish vessel and an orange teardrop to the starboard side of the start/finish vessel, as displayed in Attachment 4.

## 14 SCORING

- 14.1. The Low Point System of RRS Appendix A shall apply.
- 14.2. Four (4) races are required to be completed to constitute a series.
- 14.3. Once four (4) races have been completed, a boat's series score shall be a total of their scores, excluding her worst score.
- 14.4. Once eight (8) races have been completed, a boat's series score shall be a total of their scores, excluding her worst two (2) scores.
- 14.5. Once twelve races have been completed, a boat's series score shall be a total of their scores, excluding her worst three (3) scores.

## 15 DISCLAIMER OF ENTRY

Competitors participate in the regatta entirely at their own risk. See RRS 4, Decision to Race. The organising authority will not accept any liability for material damage or personal injury or death sustained in conjunction with or prior to, during, or after the regatta.

## 16 INSURANCE

Each participating boat shall be insured with valid third-party liability insurance with a minimum cover of \$10m per event or equivalent.

## 17 FURTHER INFORMATION

For further information please contact:

RQYS Sailing Office and/or Sailing Academy

07 3396 8666 or [sailing@rqys.com.au](mailto:sailing@rqys.com.au) / [sailingacademy@rqys.com.au](mailto:sailingacademy@rqys.com.au)



---

# ATTACHMENT 1

## REGATTA HARBOUR

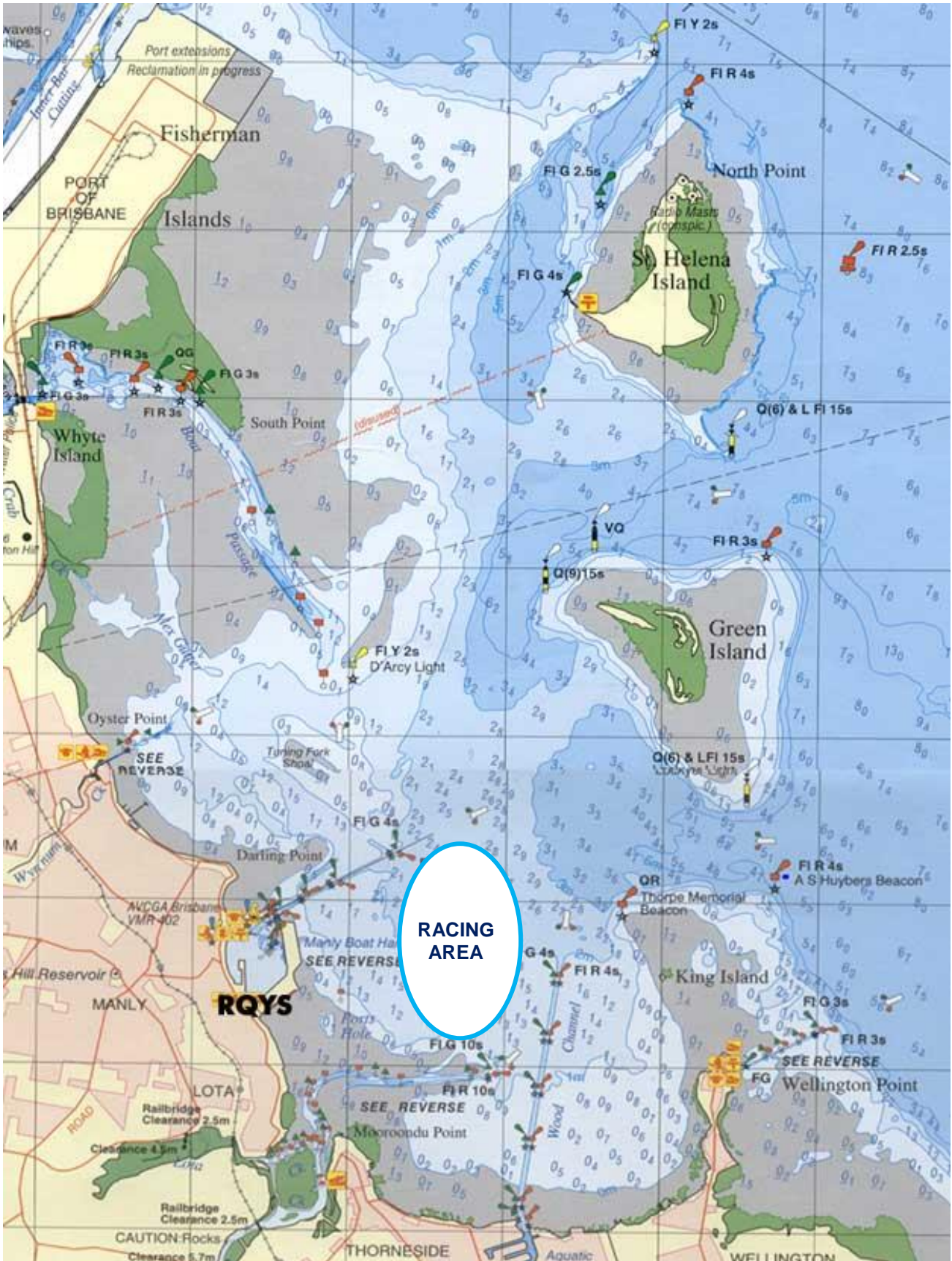
---





# ATTACHMENT 2

## APPROXIMATE RACING AREA





# ATTACHMENT 3

## WS INTRODUCTORY RULES OF SAILING

### Introductory Rules for Racing

Version 1.01 - February 2008

#### Some Explanations

*Windward* and *Leeward*: The *leeward* side of your boat is the side where your mainsail lies. The *windward* side is the other side.

*Port* and *Starboard tack*: You are on *port* or *starboard tack* according to your *windward* side.

*Advisor*: A person appointed by the race organizers to assist competitors in understanding the rules and, when appropriate, to penalize a boat.

#### Basic Rules

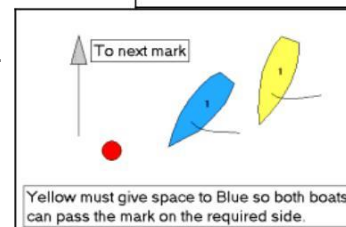
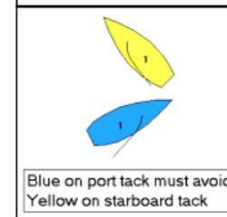
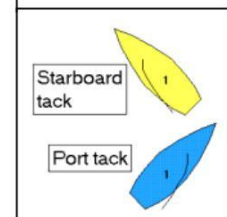
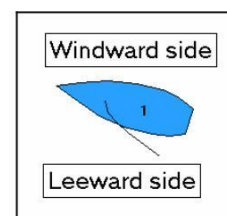
1. You must comply with the principles of good sportsmanship.
2. You must try not to collide with another boat.

#### Rules When Boats Meet

3. When you and the other boat are on opposite *tacks*, if you are on *port tack* you must avoid the boat on *starboard tack*.
4. When you and the other boat are on the same *tack*, you must avoid the other boat
  - (a) if she is in front of you, or
  - (b) if she is on your *leeward* side.
5. After starting, when you and the other boat approach a mark or an object that both boats need to avoid, and the other boat is between you and the mark or other object, you must give her sufficient space to pass it safely on the same side. However, when the boats are on opposite tacks at a windward mark, this rule does not apply.
6. When the other boat is required to avoid you, if you change course, you must give the other boat an adequate opportunity to avoid you.

#### Other Rules

7. At the starting signal you must be behind the starting line.
8. After the starting signal, you must sail the course described by the race organizers.
9. You must not touch a mark of the course.
10. If you think you or another boat has broken a rule or if you are unclear about the rules at any time during the race, you must describe the incident to the *advisor* after the race. The *advisor* may then add two points to the score of any boat that has broken a rule. If the offence is serious, the *advisor* may refer the matter to the Jury who may deal with the matter as they deem suitable within the spirit of the racing rules of sailing.

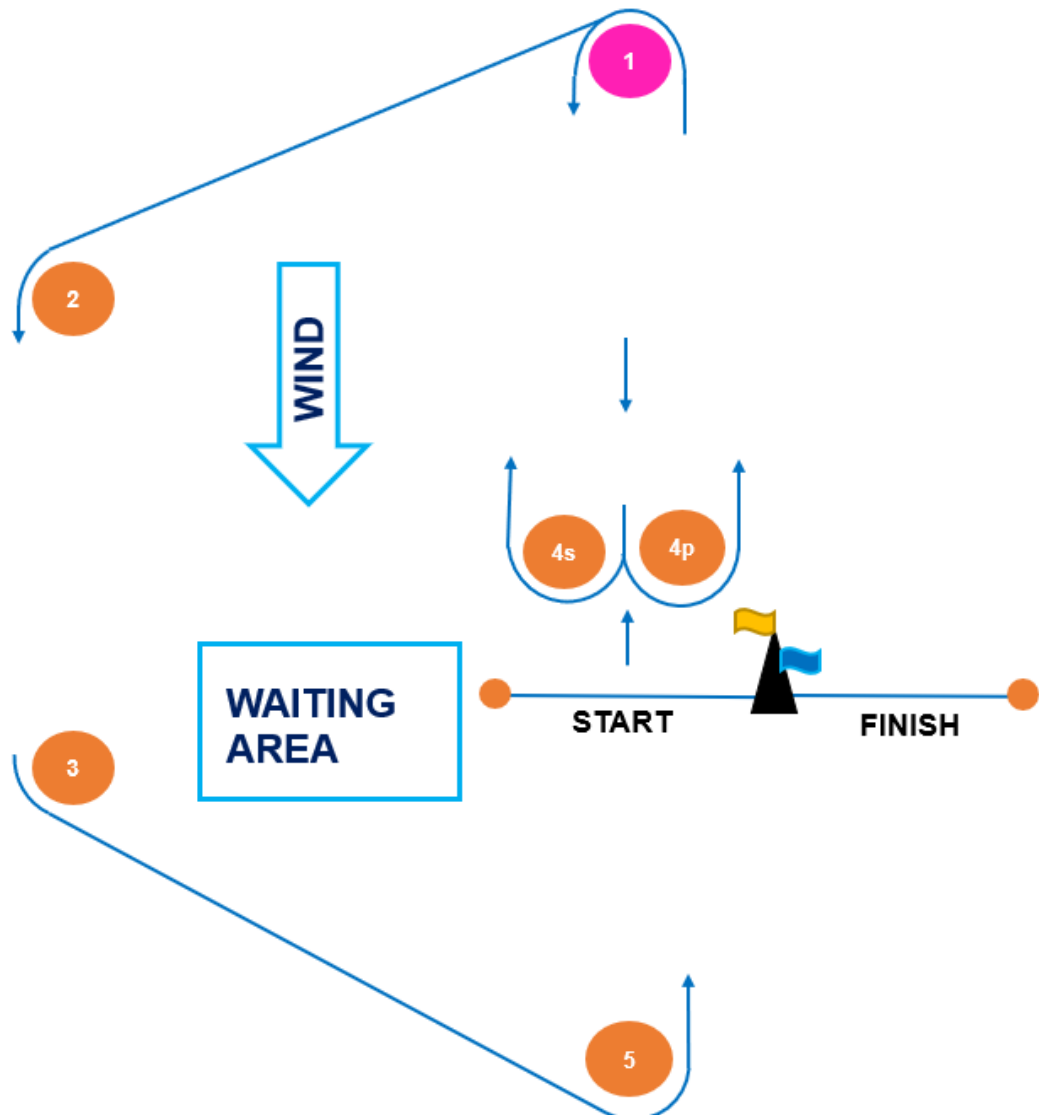




## ATTACHMENT 4 COURSE DIAGRAM

CODE	COURSE	MARKS DESCRIPTION
I2	Start – 1 – 4s/4p – 1 – 2 – 3 – 5 – Finish	<b>Marks 2, 3, 4s/4p, 5:</b> <del>Orange Inflatable (Large)</del> Coloured Flag
I3	Start – 1 – 4s/4p – 1 – 4s/4p – 1 – 2 – 3 – 5 - Finish	
O1	Start – 1 – 2 – 3 – 5 - Finish	<b>Mark 1:</b> <del>Pink Inflatable</del> Coloured Flag
O2	Start – 1 – 2 - 3 – 2 – 3 – 5 – Finish	
O3	Start – 1 – 2 – 3 – 2 – 3 – 2 – 3 – 5 – Finish	
T1	Start – 1 – 3 – 5 – Finish	<b>Start Pin, Finish Pin:</b> <del>Orange Teardrops (Small)</del> Coloured Flag

Sailors that have not started a race must wait inside the waiting area which is on the port side of the Start Pin and the Starboard side of mark 3.





# SAIL BRISBANE

28 Nov - 2 Dec 2018



Sail Brisbane showcases Olympic classes along with a number of other largely populated classes. While traditionally being run in the Mid-Winter Championship Regattas alongside QLD Youth Week, Sail Brisbane is being moved to early summer as part of the 2018/2019 Manly Summer of Sailing.

**REGISTER NOW!**

[rqys.com.au/off-beach-sailing/](http://rqys.com.au/off-beach-sailing/)



**Flying 11**

**Laser 29er**

**NAERA NAERA 15 CLASS 17**



**Open BIC CLASS**



**SABOT**

**49er FX 49er**



**RSX**

